



Four Bedroom House

The Fairway, Fleet, Hampshire, GU51 3JU

Price: £720,000

- Four Bedrooms
- Two En-Suites Plus Family Bathroom
- Hartland Village
- Garage and Driveway
- Enclosed Rear Garden
- Viewing Advised
- Remainder of NHBC Warranty
- EPC : B (85)



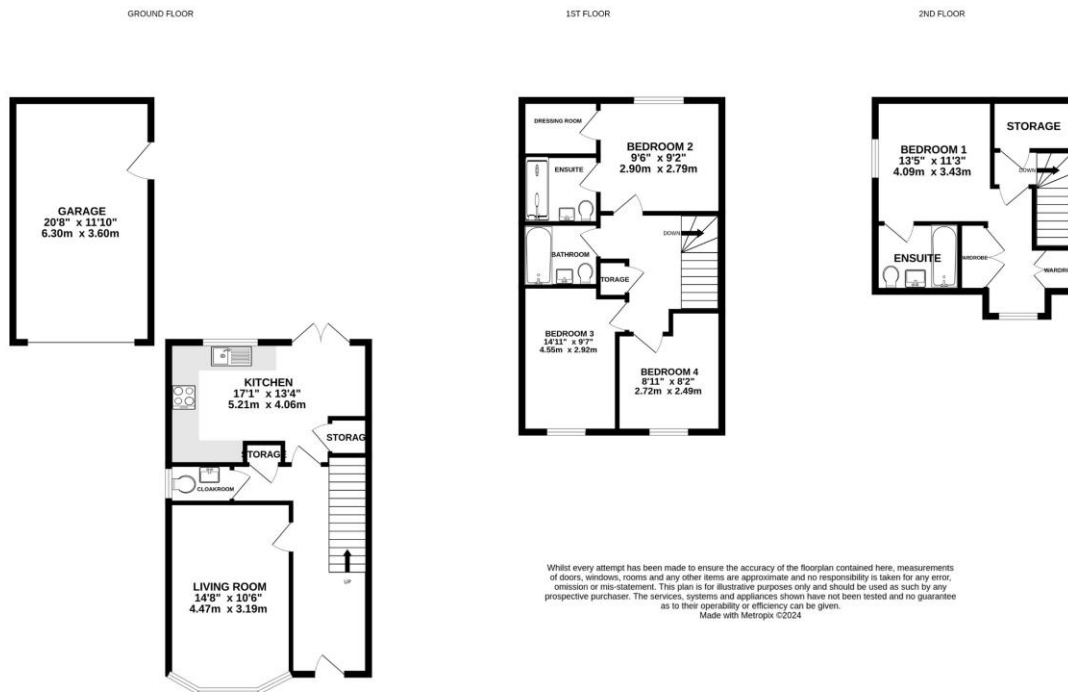
Description

Originally constructed by Berkley St. Edwards just under two years ago to their "Lavender" design. An immaculately presented four bedroom family home, occupying a corner plot within the Hartland Village development. The accommodation comprises: entrance hall, cloakroom, laundry cupboard, living room and an open plan kitchen/dining room with French doors to the rear garden. The first floor provides a guest bedroom with an ensuite and walk in wardrobe, a family bathroom and two further well proportioned bedrooms, whilst the second floor offers a spacious principle bedroom with an ensuite and dressing area. Other features to note include driveway parking and a garage. Viewings are highly advised.

Outside

A block paved driveway leads to the garage which is accessed via an up and over door. A side gate leads to the enclosed rear garden which is mainly laid to lawn with a patio seating area.

Floorplan



TO ARRANGE A VIEWING PLEASE CONTACT:
Tel: 01252 361550 or Email: info@bridges.co.uk



Important Notice - These particulars are set out as a general outline only for the guidance of intended purchasers/tenants and do not form part of any offer or contract and must not be relied upon as statements or representations of fact. Purchasers/Tenants must satisfy themselves by inspection or otherwise as to their correctness.