



## Two Bedroom Apartment

**Coombe Way, Farnborough, Hampshire, GU14 7FT**

Guide Price: £225,000

- Two Bedrooms
- First Floor Apartment
- Secure Underground Parking
- Well Presented
- South Facing Balcony
- En Suite
- No Onward Chain
- EPC : TBC



## Description

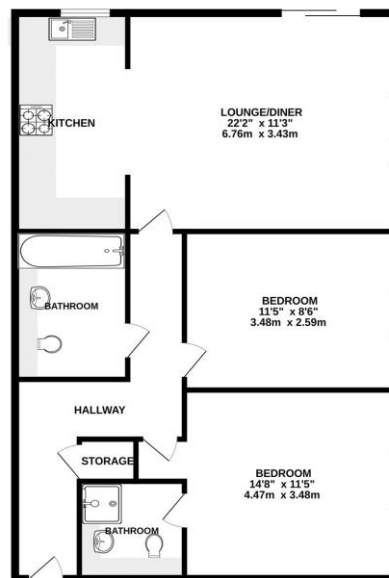
Bridges Estate Agents is pleased to market this two bedroom first floor apartment, situated in a popular development and within easy reach of Farnborough Main train station and the town centre. This modern apartment is well presented with the added benefit of a south facing balcony. The accommodation comprises a spacious entrance hall leading to all rooms, a generous lounge and dining area, a modern fitted kitchen, a principal bedroom with an en suite, a second bedroom, and a family bathroom. Furthermore, this property has the benefit of allocated secure underground parking and is offered to the market in good decorative order throughout. An ideal first time buy or investment property!

## Outside

Externally the property benefits from secure underground parking.

## Floorplan

GROUND FLOOR



Whilst every attempt has been made to ensure the accuracy of the floorplan contained here, measurements of doors, windows, rooms and any other items are approximate and no responsibility is taken for any error, omission or misstatement. This plan is for illustrative purposes only and should be used as a guide only by the prospective purchaser. The services, fixtures and appliances shown here are for illustrative purposes and not guaranteed. All in their operation is efficiency can be given. Made with Metrease 02024.



TO ARRANGE A VIEWING PLEASE CONTACT:  
Tel: **01252 361550** or Email: **info@bridges.co.uk**



Important Notice - These particulars are set out as a general outline only for the guidance of intended purchasers/tenants and do not form part of any offer or contract and must not be relied upon as statements or representations of fact. Purchasers/Tenants must satisfy themselves by inspection or otherwise as to their correctness.