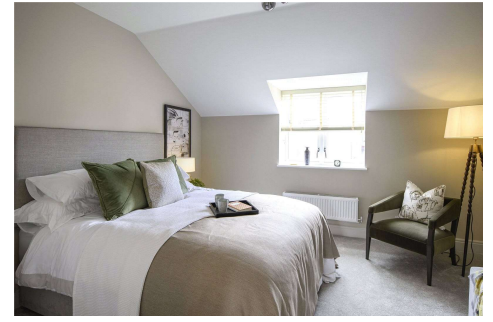
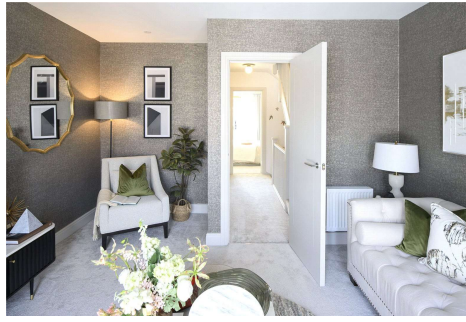
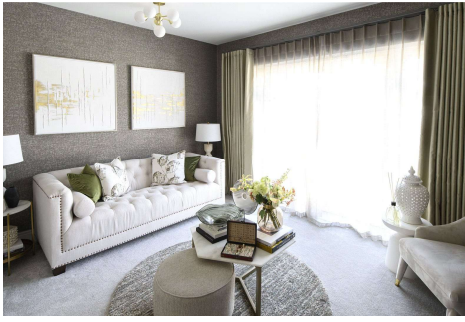


## Three Bedroom Terraced House

**Ively Road, Fleet, GU51 3GL**

Price: £535,000

- The Willow
- Three bedroom, Two Bathroom (plus cloakroom)
- 1,282 sq. ft.
- Terraced
- North East Aspect
- Private Garden
- Two Parking Spaces



# Description

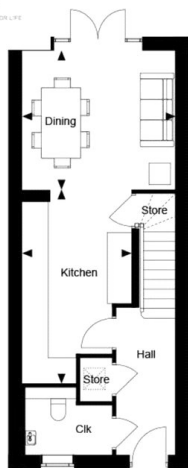
Discover a village for life in the idyllic Hampshire countryside. Hartland Village brings St Edward's undisputed quality to a choice location, creating a new village of thoughtfully designed houses and contemporary apartments surrounded by rich natural woodland.

A beautiful collection of traditionally crafted houses, all built to St Edward's exceptional standards. With private gardens, leafy streets and a position close to the Village Green and Linear Park, these homes enjoy a particularly verdant setting.

Hartland Mews is also conveniently located for the new primary school and Village Centre, so you can enjoy a wide array of amenities and community facilities just a few moments from your front door.

\*Please note that photos are of the development and may not be of the exact property\*

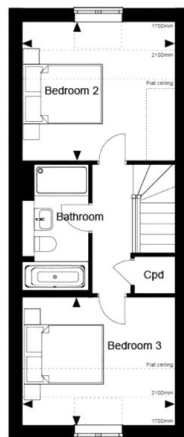
# Floorplan



Hartland Village, Hartland Mews - The Willow, Property 66, Ground Floor

Dimensions		
Dining Room	3.86m x 3.49m	12' 8" x 11' 5"
Kitchen	4.90m x 2.75m	16' 1" x 9' 0"
Total Area	119.1 sq.m	1,282 sq.ft

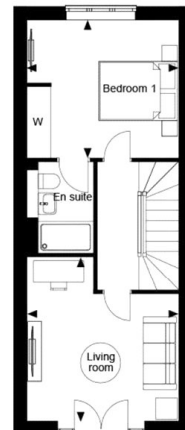
Key  
Clk Cook Room



Hartland Village, Hartland Mews - The Willow, Property 66, Second Floor

Dimensions		
Bedroom 2	3.86m x 3.49m	12' 8" x 11' 5"
Bedroom 3	3.86m x 3.24m	12' 8" x 10' 8"

Key  
Cpd Cupboard



Hartland Village, Hartland Mews - The Willow, Property 66, First Floor

Dimensions		
Living Room	4.18m x 3.86m	13' 8" x 12' 8"
Bedroom 1	3.86m x 3.49m	12' 8" x 11' 5"

Key  
W Wardrobe

St Edward



TO ARRANGE A VIEWING PLEASE CONTACT:  
Tel: 01252 361550 or Email: [info@bridges.co.uk](mailto:info@bridges.co.uk)



Important Notice - These particulars are set out as a general outline only for the guidance of intended purchasers/tenants and do not form part of any offer or contract and must not be relied upon as statements or representations of fact. Purchasers/Tenants must satisfy themselves by inspection or otherwise as to their correctness.