



## Three Bedroom House

**Caswell Close, Farnborough, GU14 8TE**

**Price: £325,000**

- Three Bedrooms
- No Onward Chain
- Family Location
- Good Transport Links
- Well Presented
- Close to Schools
- Great Investment/Starter Home
- EPC: D (57)





## Description

Three bedroom family home ideally located, overlooking the Green and in close proximity to local schools, bus links and shops.

To the ground floor you will find an entrance hallway with a cloakroom, good size main lounge overlooking the garden, modern refitted kitchen and dining room leading out to the garden.

The first floor offers two generous double bedrooms stylish three piece family bathroom and a further third bedroom overlooking the green.

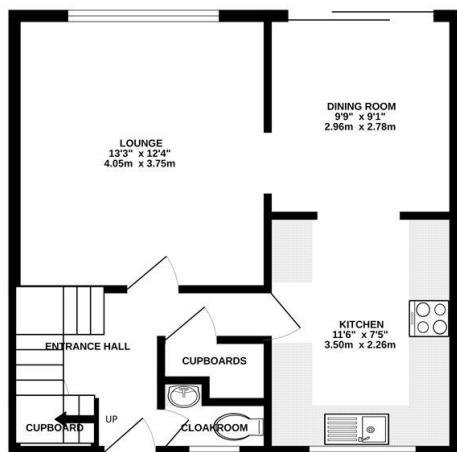
Making a great sized family home in a popular location, viewings are highly recommended and can be arranged with the Bridges team.

## Outside

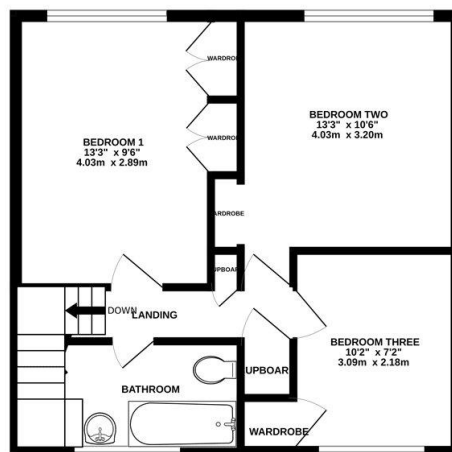
A good sized, low maintenance rear garden with a brick built storage shed and gated access out to the parking area. The rear garden is a perfect space for entertaining friends or just enjoying the sunshine.

## Floorplan

GROUND FLOOR



1ST FLOOR



Whilst every attempt has been made to ensure the accuracy of the floorplan contained here, measurements of doors, windows, rooms and any other items are approximate and no responsibility is taken for any error, omission or mis-statement. This plan is for illustrative purposes only and should be used as such by any prospective purchaser. The services, systems and appliances shown have not been tested and no guarantee as to their operability or efficiency can be given.  
Made with Metroplan ©2025



**TO ARRANGE A VIEWING PLEASE CONTACT:**  
Tel: **01252 361550** or Email: **info@bridges.co.uk**



**Important Notice** - These particulars are set out as a general outline only for the guidance of intended purchasers/tenants and do not form part of any offer or contract and must not be relied upon as statements or representations of fact. Purchasers/Tenants must satisfy themselves by inspection or otherwise as to their correctness.