



One Bedroom Ground Floor Apartment Fairway Heights, Camberley, Surrey, GU15 1NJ

Guide Price: £200,000

- One Double Bedroom
- Ground Floor Apartment
- Recently Redecorated Throughout
- Ample Residents Parking
- Views On to Camberley Heath Golf Course
- No Onward Chain
- Estimated Rental Price: TBC
- EPC: C (77)



Description

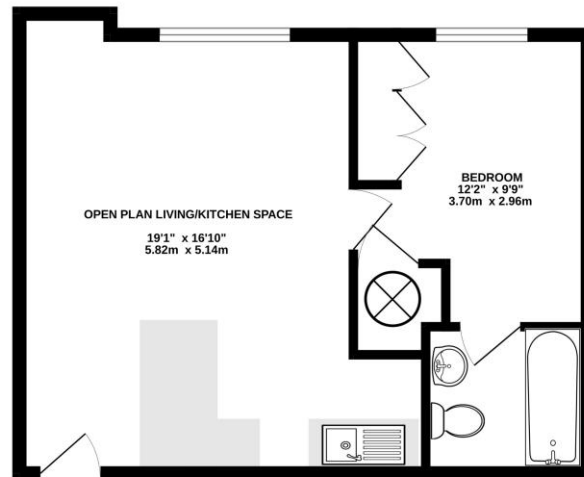
A well presented "Charles Church" Richmon II design one bedroom ground floor apartment located in a quiet cul-de-sac and benefiting from views out on to Camberley heath Golf course. The property benefits from ample residents parking and is offered to the market with no onward chain. The accommodation comprises of an open plan living/kitchen with views out on to the gold course, a double bedroom with fitted wardrobe and door on to the en suite bathroom. An internal inspection is highly recommended to truly appreciate all that this property has to offer.

Outside

Externally the property benefits from beautifully maintained communal gardens offering views on to Camberley Heath Golf course as well as ample residents parking.

Floorplan

GROUND FLOOR



Whilst every attempt has been made to ensure the accuracy of the floorplan contained herein, measurements of doors, windows, rooms and any other items are approximate and no responsibility is taken for any error, omission or mis-statement. This plan is for guidance purposes only and should be used as a guide only. The prospective purchaser is advised to verify the accuracy of the floorplan and measurements by inspection or otherwise as to their correctness. Made with Hozonplan 10/2019



TO ARRANGE A VIEWING PLEASE CONTACT:

Tel: **01276 685544** or Email:

camberley@bridges.co.uk



Important Notice - These particulars are set out as a general outline only for the guidance of intended purchasers/tenants and do not form part of any offer or contract and must not be relied upon as statements or representations of fact. Purchasers/Tenants must satisfy themselves by inspection or otherwise as to their correctness.