



Two Bedroom End of Terrace House

Broadhurst, Farnborough, Hampshire, GU14 9XA

Offers in excess of: £300,000

- Two Double Bedrooms
- Charles Church Style Home
- Ample Parking
- Corner Plot Garden
- Barningly Park Development
- Close Proximity to Local Shops and Amenities
- No Onward Chain
- EPC: C (70)



Description

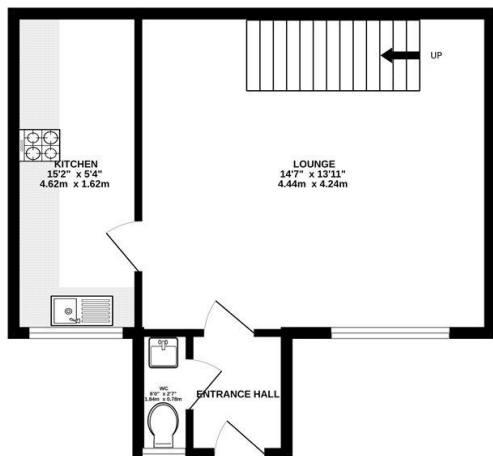
Located in the popular Barningley Park development, is this attractive two bedroom home offered with No Onward Chain. To the ground floor the property benefits from a cloakroom, good sized lounge/diner and a kitchen/breakfast room. The first floor offers two bedrooms, ample storage space and a three piece bathroom suite. Broadhurst is within walking distance of local shops, offers good access to the M3 Motorway, Junction 4A, A30, A325 and is a short drive of both Farnborough and Fleet Railway Stations and Town Centres. Viewings are recommended and can be booked in direct with the Farnborough team.

Outside

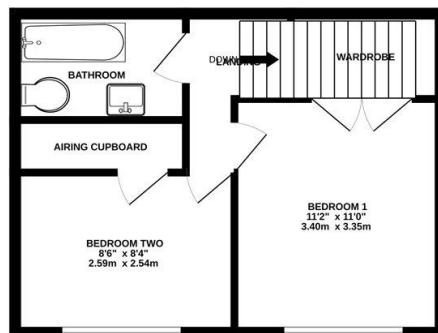
To the front of the property is a low maintenance corner plot garden that has a decked area leading up to the entrance, a patio picnic area and enclosed by panelled fencing.

Floorplan

GROUND FLOOR



1ST FLOOR



Whilst every attempt has been made to ensure the accuracy of the floorplan contained here, measurements of doors, windows, rooms and any other items are approximate and no responsibility is taken for any error, omission or mis-statement. This plan is for illustrative purposes only and should be used as such by any prospective purchaser. The services, systems and appliances shown have not been tested and no guarantee as to their operability or efficiency can be given.
Made with Metropix ©2025



TO ARRANGE A VIEWING PLEASE CONTACT:
Tel: **01252 361550** or Email: **info@bridges.co.uk**



Important Notice - These particulars are set out as a general outline only for the guidance of intended purchasers/tenants and do not form part of any offer or contract and must not be relied upon as statements or representations of fact. Purchasers/Tenants must satisfy themselves by inspection or otherwise as to their correctness.