

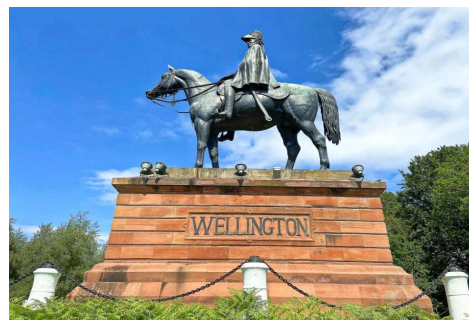
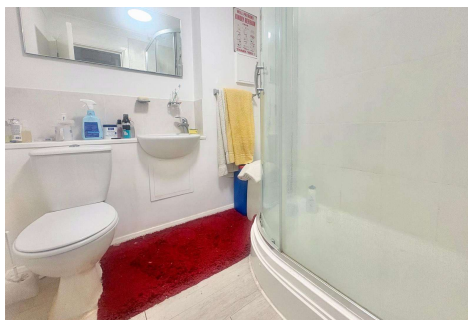
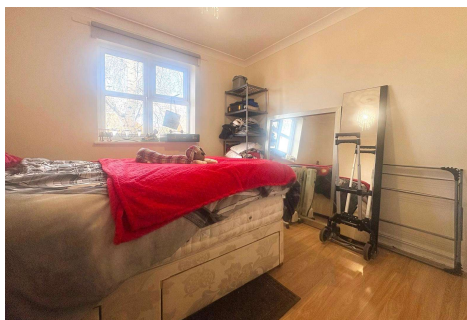


One Bedroom Apartment

Newport Road, Aldershot, Hampshire, GU12 4LL

Price: £150,000

- One Double Bedroom
- First Floor Apartment
- Modern Throughout
- Close to Town Centre and Local Amenities
- Allocated Parking
- Communal Grounds
- Double Glazed Windows
- EPC: C (80)



Description

Situated within walking distance of both Aldershot town centre and mainline railway station. Accommodation comprises a lounge with a bay window, double bedroom, spacious kitchen and bathroom. Previous storage heaters have been upgraded to modern electric heaters and the property benefits from a long lease. Further benefits include double glazed windows, allocated parking and communal grounds. Give us a call today to book your viewing!

Outside

The property offers one allocated parking space and communal grounds.

Floorplan

FIRST FLOOR



Whilst every attempt has been made to ensure the accuracy of the floorplan contained here, measurements of doors, windows, rooms and any other items are approximate and no responsibility is taken for any error, omission or misstatement. This plan is for illustrative purposes only and should not be used as a basis for any prospective purchase. The services, systems and appliances shown have not been tested and no guarantee as to their operability or efficiency can be given.
Made with Smartplan ©2025



TO ARRANGE A VIEWING PLEASE CONTACT:
Tel: **01252 361550** or Email: **info@bridges.co.uk**



Important Notice - These particulars are set out as a general outline only for the guidance of intended purchasers/tenants and do not form part of any offer or contract and must not be relied upon as statements or representations of fact. Purchasers/Tenants must satisfy themselves by inspection or otherwise as to their correctness.