



One Bedroom Apartment, Retirement Hillstead Court, Basingstoke, Hampshire, RG21 3PT

Price: £110,000 *Leasehold*

- One Double Bedroom
- First Floor Apartment
- Shower Room
- Kitchen
- Communal Gardens
- Fairfields Location
- Over 55's Complex
- EPC : C (74)



Description

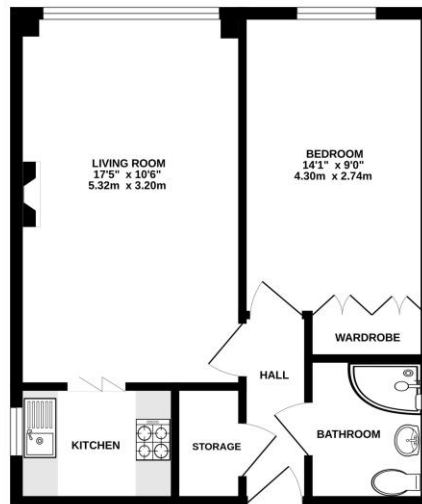
Offered to the market with no onward chain is this first floor one double bedroom over 55's apartment within Basingstoke's Town Centre. The accommodation includes an entrance hall, a storage cupboard, a shower room, a double bedroom with built in wardrobes and a window overlooking the gardens, and a spacious living room with a big window looking out onto the beautiful green communal gardens. There is a kitchen just off the living room with an electric hob, a fridge freezer and a sink with a drainer. The complex also comprises communal facilities including a residents lounge, a kitchen, a laundry room, and stores (useful for mobility scooters or bikes). Other benefits include recently fitted windows, a lift, and a house manager. The location is perfect for easy access to the town centre with its range of shops and restaurants, as well as Basingstoke main train station. There are local bus routes close by too, as well as some parkland areas within close proximity.

Outside

Externally there is residents and visitor parking to the front. To the rear there is a spacious, beautifully maintained communal garden with a patio, a seating area, and around the side washing lines. Hillstead Court comprises of 33 properties arranged over 3 floors each served by lift. The Development Manager can be contacted from various points within each property in the case of an emergency. For periods when the Development Manager is off duty there is a 24 hour emergency Appello call system.

Floorplan

FIRST FLOOR



*While every effort has been made to ensure the accuracy of the floorplan contained here, measurements of doors, windows, rooms and any other items are approximate and no responsibility is taken for any error, omission or mis-statement. This plan is for illustrative purposes only and should be used as a guide only for prospective purchasers. The services, fixtures and fittings shown here are not intended and no guarantee as to their quantity or efficiency can be given. Home-View Mortgage (2022)



TO ARRANGE A VIEWING PLEASE CONTACT:
Tel: **01256 880001** or Email: **info@bridges.co.uk**



Important Notice - These particulars are set out as a general outline only for the guidance of intended purchasers/tenants and do not form part of any offer or contract and must not be relied upon as statements or representations of fact. Purchasers/Tenants must satisfy themselves by inspection or otherwise as to their correctness.