



Three Bedroom Semi-Detached House

Englesfield, Camberley, Surrey, GU15 1RT

Guide Price: £425,000

- Three Bedrooms
- Semi Detached
- No Chain
- Lounge/Diner
- Garage
- Enclosed Rear Garden
- Close to Schools
- EPC: D (56)



Description

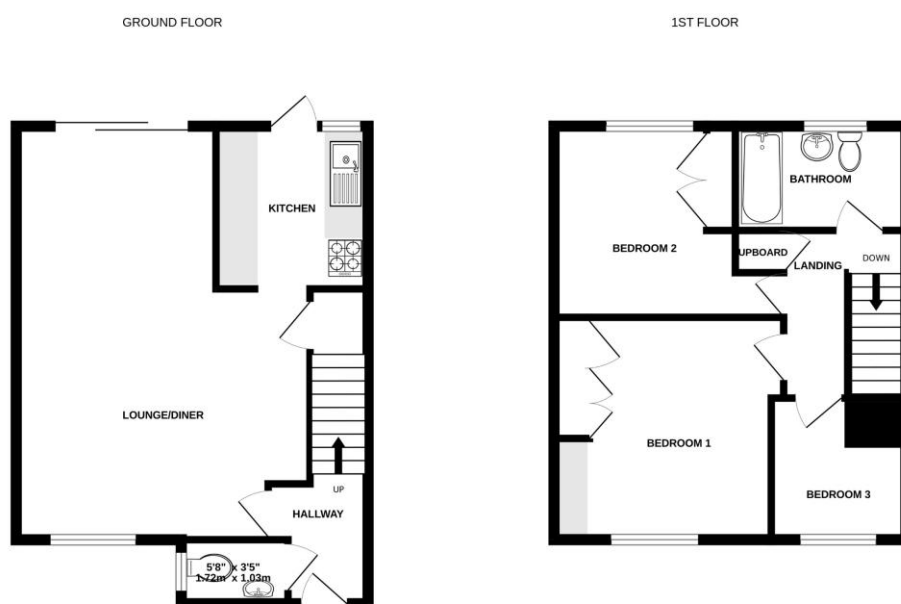
Offered to the market with no onward chain stands this well presented three bedroom property located in a sought after position in the ever popular Heatherside development. The property briefly comprises of entrance porch, lounge/diner, kitchen and a cloakroom. To the first floor there are three bedrooms and a family bathroom.

The property is located within walking distance of a local Sainsburys, doctors` surgery, post office, parks and play areas, open woodlands and you are within the catchment areas of popular primary and secondary schools. You are also within close proximity of J3 of the M3, A30, A331 and Brookwood, Frimley, Farnborough and Camberley train stations making this an ideal area for commuting into London or the South.

Outside

Externally, the property benefits from an enclosed rear garden that is mainly laid to lawn with a patio area and side gate. To the front you have a garden space that is mainly laid to lawn with a courtesy path to the front door as well as a single garage in a nearby block. The property is conveniently located within easy access to local amenities, great commuter links via the A30/M3, and excellent local schools.

Floorplan



Whilst every attempt has been made to ensure the accuracy of the floorplan contained here, measurements of doors, windows, rooms and any other items are approximate and no responsibility is taken for any error, omission or mis-statement. This plan is for illustrative purposes only and should be used as such by any prospective purchaser. The services, contents and appliances shown have not been tested and no guarantee as to their operability or efficiency can be given.
Made with Metropix G3025



TO ARRANGE A VIEWING PLEASE CONTACT:

Tel: **01276 685544** or Email:
camberley@bridges.co.uk



Important Notice - These particulars are set out as a general outline only for the guidance of intended purchasers/tenants and do not form part of any offer or contract and must not be relied upon as statements or representations of fact. Purchasers/Tenants must satisfy themselves by inspection or otherwise as to their correctness.