



## Two Bedroom Apartment

**Park Road, Camberley, Surrey, GU15 2SP**

Guide Price: £250,000

- Two Double Bedrooms
- First Floor
- Executive Apartment
- Allocated Parking
- Easy Access to Camberley Town Centre
- No Onward Chain
- Estimated Rental Price: TBC
- EPC: B (81)





## Description

A light and spacious first floor two bedroom apartment located in a sought after location within easy access to Camberley Town centre, great commuter links and local schools. The property benefits from gas central heating via radiators and is offered to the market with no onward chain.

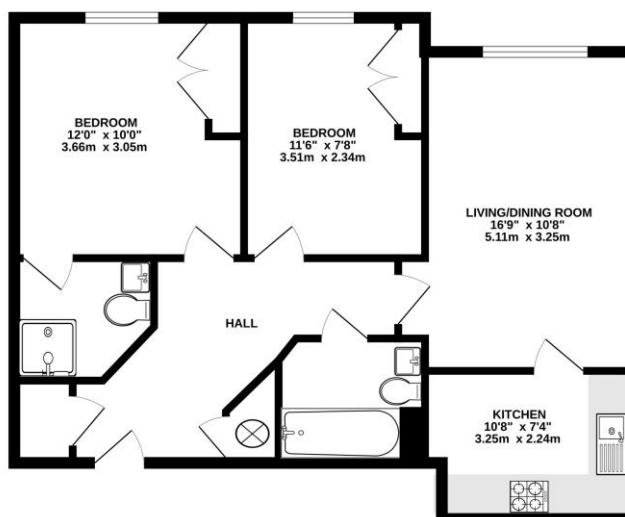
The accommodation comprises of a spacious living/dining room, separate kitchen, two double bedrooms, the main with an en suite shower room as well as a family bathroom.

## Outside

Externally the property further benefits from communal gardens and an allocated parking bay plus a share of visitors parking.

## Floorplan

FIRST FLOOR



Whilst every attempt has been made to ensure the accuracy of the floorplan contained herein, measurements of doors, windows, rooms and any other details are approximate and no responsibility is taken for any error, omission or mis-statement. This plan is for information purposes only and should be used as a guide only. No guarantee is given as to the accuracy of the floorplan. The floorplan is not to be used as a basis for any claim or liability. It is the responsibility of the purchaser/tenant to verify the accuracy of the floorplan. Made with Metreplan 10.0.0.1



**TO ARRANGE A VIEWING PLEASE CONTACT:**

**Tel: 01276 685544 or Email:**

**[camberley@bridges.co.uk](mailto:camberley@bridges.co.uk)**



**Important Notice - These particulars are set out as a general outline only for the guidance of intended purchasers/tenants and do not form part of any offer or contract and must not be relied upon as statements or representations of fact. Purchasers/Tenants must satisfy themselves by inspection or otherwise as to their correctness.**