

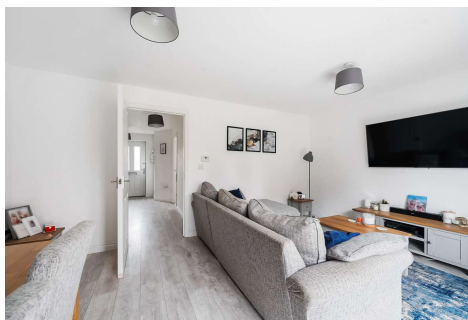


Three Bedroom Semi-Detached House

Parsons Way, Tongham, Surrey, GU10 1FB

Offers in excess of: £500,000

- Three Double Bedrooms
- Semi-Detached
- Quiet Location
- 2015 Build
- En Suite
- Garage
- Downstairs Cloakroom
- EPC: C (80)



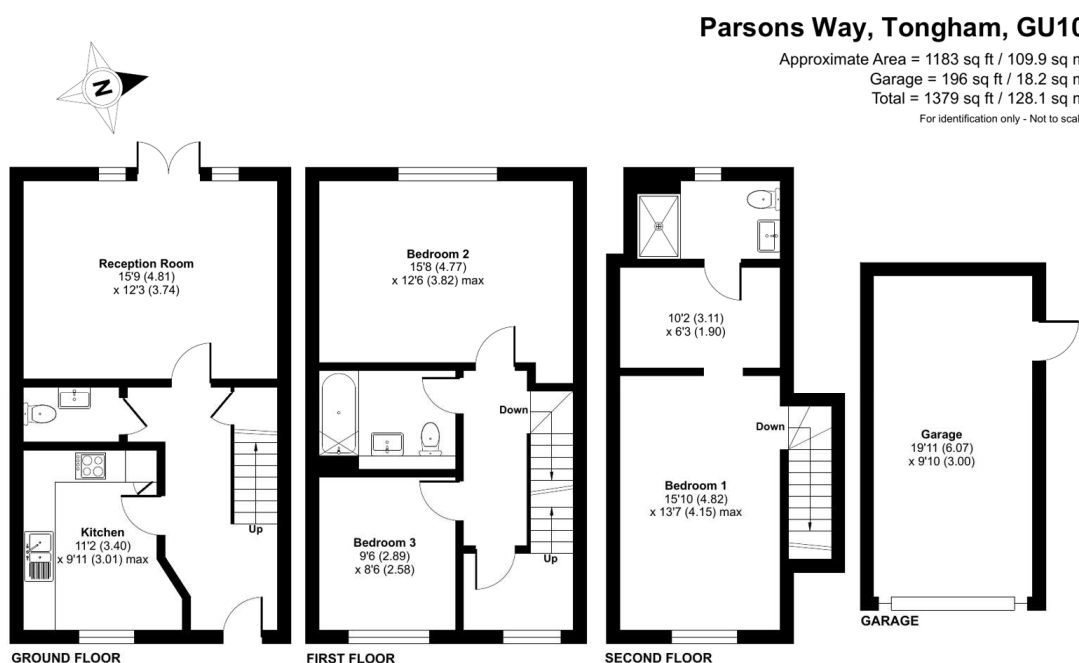
Description

Located in a quiet development in the popular village of Tongham is this fantastic three double bedroom semi-detached family home. The property is ideally located, only minutes away from the local amenities and Ash Manor secondary school - whilst also offering easy access onto the A331, A3 and M3. The property downstairs boasts a generous size living room, with double doors leading into the garden - as well as a kitchen/breakfast room and a cloakroom. The first floor boasts two bedrooms and a family bathroom. The top floor is one of the true highlights of the home - showcasing a stunning large, double bedroom with walk through wardrobe and an en suite shower room. This property simply must be seen, so please call Bridges today to book your viewing!

Outside

Outside boasts a private enclosed garden, driveway parking for multiple vehicles and a garage with power and lighting.

Floorplan



Floor plan produced in accordance with RICS Property Measurement 2nd Edition, incorporating International Property Measurement Standards (IPMS2 Residential). © nchecom 2025. Produced for Bridges Estate Agents. REF: 1243150

Bridges
CO. UK

Bridges

TO ARRANGE A VIEWING PLEASE CONTACT:
 Tel: **01252 361550** or Email: **info@bridges.co.uk**



Important Notice - These particulars are set out as a general outline only for the guidance of intended purchasers/tenants and do not form part of any offer or contract and must not be relied upon as statements or representations of fact. Purchasers/Tenants must satisfy themselves by inspection or otherwise as to their correctness.