



Four Bedroom Semi-Detached House

Heathcote Road, Ash, Surrey, GU12 5BH

Price: £475,000 *Freehold*

- Four Double Bedrooms
- Downstairs Shower Room
- Garage
- Driveway Parking
- Walking Distance to Amenities and Rail Station
- Utility Room
- Cloakroom
- EPC: D (68)



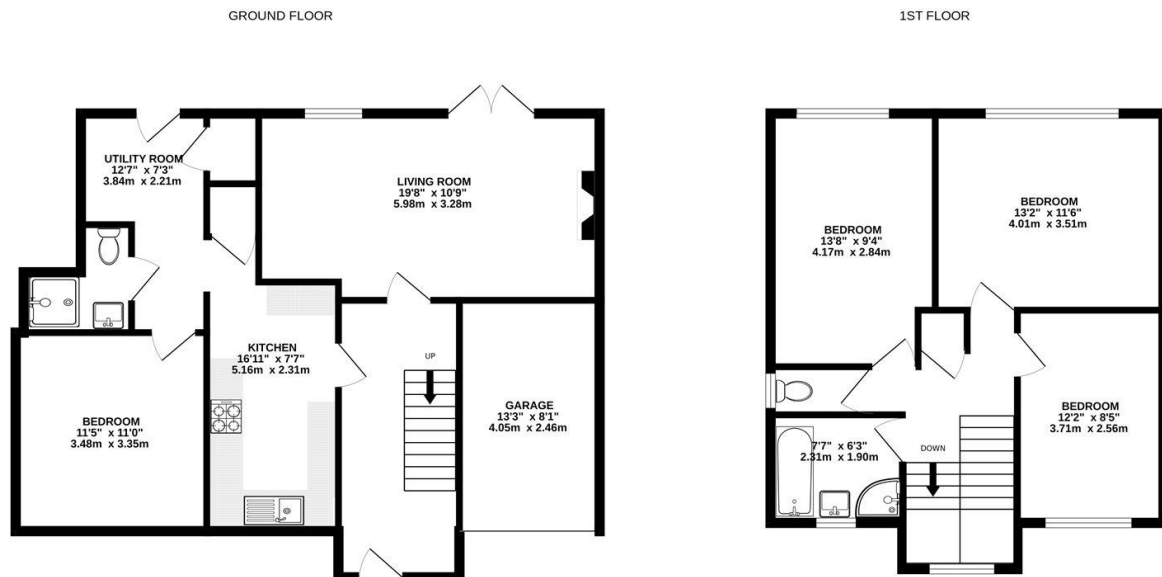
Description

Set within a quiet cul-de-sac in the heart of the village, and only minutes walk from the local rail station and local amenities, is this spacious four double bedroom home. The property downstairs boasts a large kitchen/breakfast room, with plenty of worktop and cupboard space - as well as a generous size living room/diner. You will also find a utility room and a double bedroom/study room - alongside a shower room and a cloakroom. Upstairs boasts three double bedrooms and a family bathroom suite. Call us today to book your viewing!

Outside

Outside boasts driveway parking for multiple vehicles, a garage and a private enclosed garden.

Floorplan



Whilst every attempt has been made to ensure the accuracy of the floorplan contained here, measurements of doors, windows, rooms and any other items are approximate and no responsibility is taken for any error, omission or mis-statement. This plan is for illustrative purposes only and should be used as such by any prospective purchaser. The services, systems and appliances shown have not been tested and no guarantee as to their operability or efficiency can be given.
Made with Metropix ©2025



TO ARRANGE A VIEWING PLEASE CONTACT:
Tel: **01252 361550** or Email: **info@bridges.co.uk**



Important Notice - These particulars are set out as a general outline only for the guidance of intended purchasers/tenants and do not form part of any offer or contract and must not be relied upon as statements or representations of fact. Purchasers/Tenants must satisfy themselves by inspection or otherwise as to their correctness.