

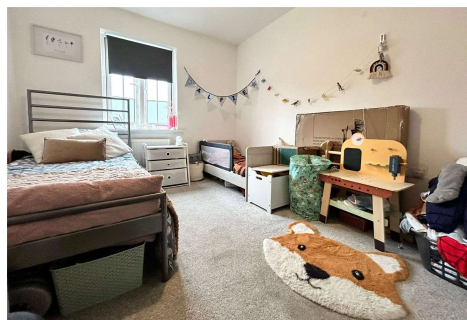
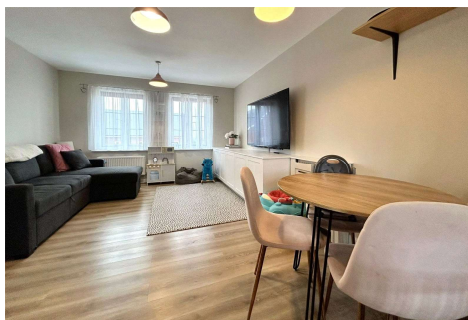
## Two Bedroom Apartment

**Charteris Close, Wellesley, Aldershot, Hampshire, GU11 4DZ**

Price: £277,000

- Two Double Bedrooms
- Apartment
- Two Allocated Parking Spaces
- Close to Town Centre
- Lease: Approx. 120 Years
- Scenic Views
- Close to Train Station
- EPC: B (84)





## Description

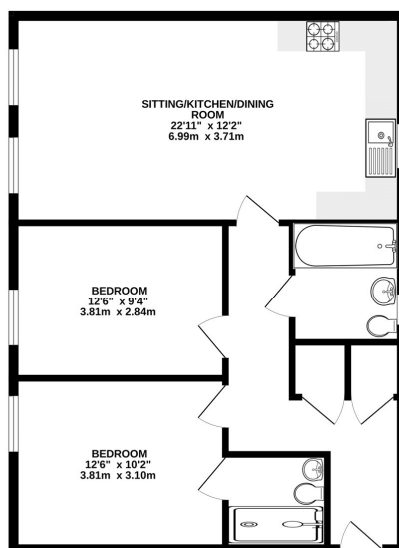
A fantastic opportunity to purchase this two bedroom apartment, situated at the heart of the Wellesley development in Aldershot. This well presented apartment comes with the unusual bonus feature of two allocated parking spaces. Accommodation comprises of an open plan living room, kitchen with integrated appliances and two spacious double bedrooms with fitted wardrobes - as well as an en suite in the principal. There are also storage cupboards and family bathroom. Additionally, there is visitor parking and lockable outside storage for bicycles. Aldershot town centre and mainline railway station are both less than one mile away, as are local shops and woodland walks.

## Outside

Two parking spaces and positioned close to local woodland and walking routes.

## Floorplan

SECOND FLOOR



Whilst every attempt has been made to ensure the accuracy of the floorplan contained herein, measurements of doors, windows, rooms and any other items are approximate and no responsibility is taken for any errors, omissions or misstatements. This plan is for illustrative purposes only and should be used as such by any prospective purchaser. The services, systems and appliances shown have not been tested and no guarantee as to their operability or efficiency can be given. Marked with electronic CDESA



**TO ARRANGE A VIEWING PLEASE CONTACT:**  
Tel: **01252 361550** or Email: **info@bridges.co.uk**



**Important Notice** - These particulars are set out as a general outline only for the guidance of intended purchasers/tenants and do not form part of any offer or contract and must not be relied upon as statements or representations of fact. Purchasers/Tenants must satisfy themselves by inspection or otherwise as to their correctness.