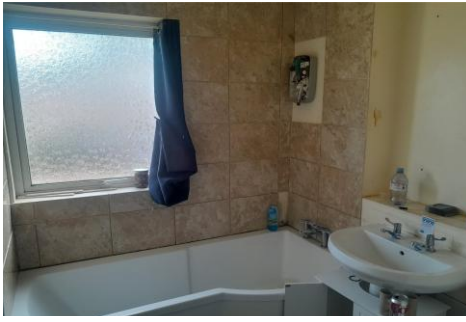


## Four Bedroom End of Terrace House

**Rosedale Gardens, Bracknell, Berkshire, RG12 7EY**

Asking Price: £325,000

- Four Bedrooms
- Living Room
- Study
- Kitchen/Diner
- Family Bathroom
- Downstairs Cloakroom
- Private and Secluded Garden
- EPC: D (66)



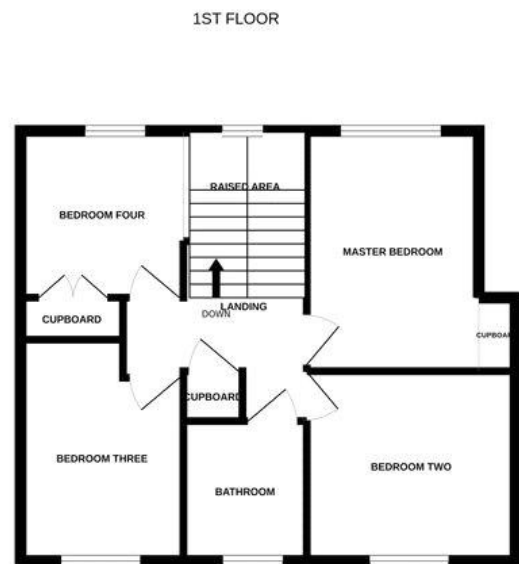
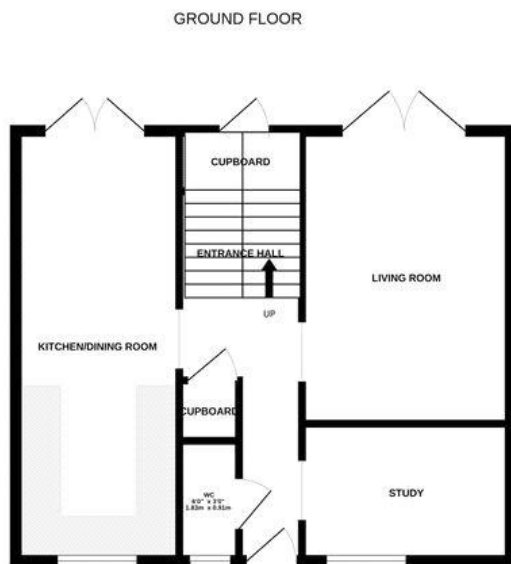
## Description

In need of modernisation throughout and offering plenty of potential, situated in a popular cul-de-sac location. Within close proximity to Bracknell Lexicon Centre and mainline railway station and available with no onward chain.

## Outside

Private and secluded garden enclosed by wood panel fencing and a garage situated in a nearby block.

## Floorplan



Made with Metropix ©2022



TO ARRANGE A VIEWING PLEASE CONTACT:

Tel: **01344 962150** or Email:



Important Notice - These particulars are set out as a general outline only for the guidance of intended purchasers/tenants and do not form part of any offer or contract and must not be relied upon as statements or representations of fact. Purchasers/Tenants must satisfy themselves by inspection or otherwise as to their correctness.