



Two Bedroom Maisonette

Netley Street, Farnborough, Hampshire, GU14 6AH

Guide Price: £240,000

- Two Double Bedrooms
- First Floor Maisonette
- Lounge/Diner
- Fitted Kitchen
- Garage
- UPVC Double Glazing
- Gas Radiator Heating
- EPC: D (58)



Description

This beautifully presented two bedroom first floor maisonette offers a perfect blend of space, light and comfort. Located in the popular area of North Camp, the property boasts two generously sized double bedrooms, providing ample space for both relaxation and storage.

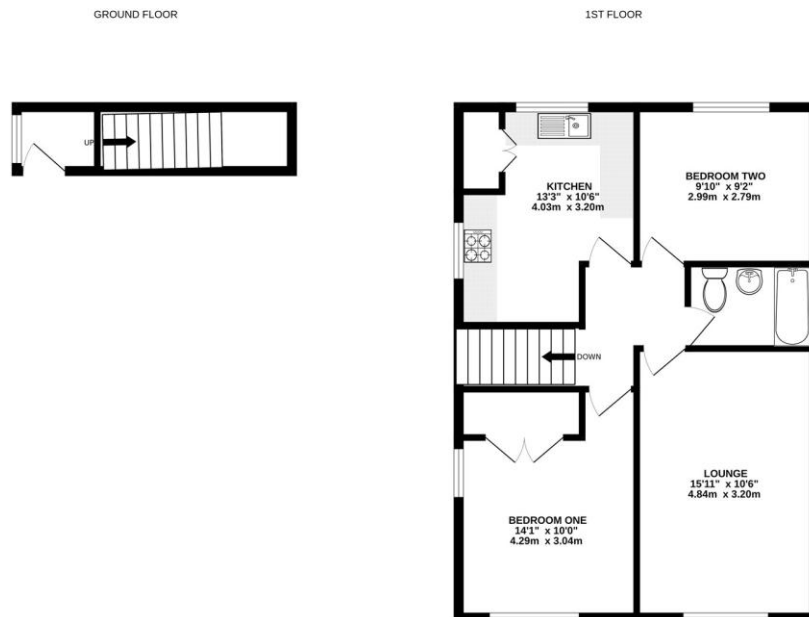
The property has a spacious, well appointed kitchen, offering plenty of room for dining and cooking. The recently refitted bathroom is stylish and modern.

Additional benefits include a garage, ideal for secure parking or extra storage. The property enjoys a bright, airy feel throughout, thanks to its big windows and spacious rooms.

Outside

Situated in a sought after location, close to local amenities, transport links, and green spaces, this maisonette is an excellent opportunity for first time buyers or those looking for a comfortable home.

Floorplan



Whilst every attempt has been made to ensure the accuracy of the floorplan contained here, measurements of doors, windows, rooms and any other items are approximate and no responsibility is taken for any error, omission or mis-statement. This plan is for illustrative purposes only and should be used as such by any prospective purchaser. The services, systems and appliances shown have not been tested and no guarantee as to their operability or efficiency can be given.
Made with Metropex ©2025



TO ARRANGE A VIEWING PLEASE CONTACT:
Tel: **01252 361550** or Email: **info@bridges.co.uk**



Important Notice - These particulars are set out as a general outline only for the guidance of intended purchasers/tenants and do not form part of any offer or contract and must not be relied upon as statements or representations of fact. Purchasers/Tenants must satisfy themselves by inspection or otherwise as to their correctness.