

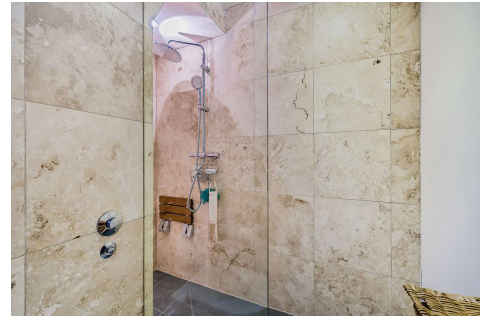


## Two Bedroom Terraced House

**Frimley Road, Ash Vale, Surrey, GU12 5NT**

**Price: £400,000**

- Two Bedroom Character Cottage
- Close to Mainline Stations
- Downstairs Shower Room
- Fully Renovated Throughout
- Bonus Room
- Garage
- Driveway Parking
- EPC: C (76)



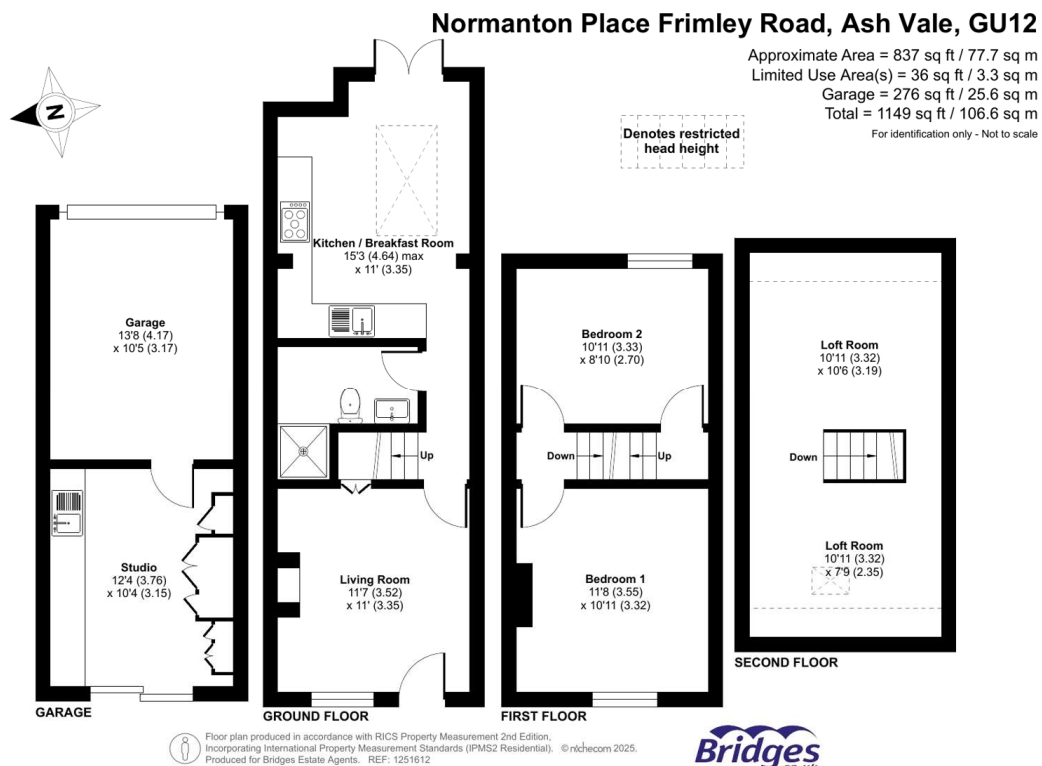
## Description

This beautiful cottage, situated in a fantastic location in Ash Vale, has been modernised to offer a mix of character, charm and modern convenience. This home has been cleverly extended to the rear to offer a lovely kitchen/diner with skylight, as well as benefitting from a detached garage with an attached studio and additional parking for two vehicles. Downstairs there are two reception rooms, the beautiful shower room and direct access from the rear to the garden and the garage/workshop space. Upstairs are two double bedrooms with new carpets, as well as access to the bonus loft room - which has a Velux window and has plenty of scope to be turned into a bedroom or home office space. This property is situated within an easy walking distance of Ash Vale mainline station and access to the Basingstoke canal towpath. Holly Lodge primary school is situated within half a mile of the property as well as local amenities. This home simply must be seen to be fully appreciated, so please call us today to avoid missing out!

## Outside

Externally is a rear garden with patio area, plus garage and workshop/utility space - which could easily be a home office or more storage space. The driveway is to the rear too.

## Floorplan



**TO ARRANGE A VIEWING PLEASE CONTACT:**  
 Tel: **01252 361550** or Email: **info@bridges.co.uk**



Important Notice - These particulars are set out as a general outline only for the guidance of intended purchasers/tenants and do not form part of any offer or contract and must not be relied upon as statements or representations of fact. Purchasers/Tenants must satisfy themselves by inspection or otherwise as to their correctness.