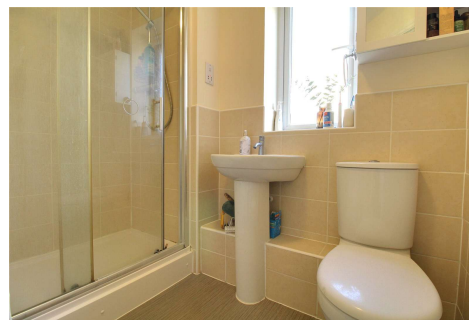
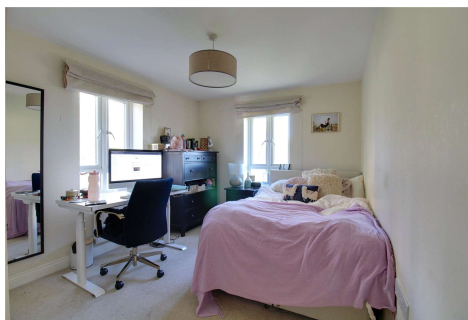


Two Bedroom Apartment

Sinclair Drive, Basingstoke, Hampshire, RG21 6AE

Price: £220,000

- Two Double Bedrooms
- 2nd Floor Apartment
- En Suite to Bedroom One
- Balcony
- Allocated Parking
- No Onward Chain
- Close to Station and Festival Place
- EPC: C (78)



Description

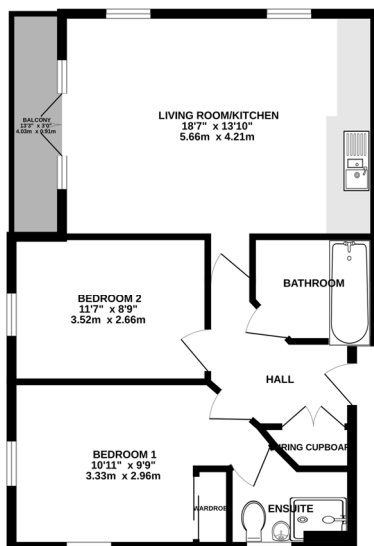
Offered to the market is this two bedroom, two bathroom apartment, located on its own floor within the block. The property is within walking distance to Festival Place and the train station - as well as other local amenities. The property has a private door from the hallway, accessed via security entry system. You will also find a private balcony and an en suite to the principal bedroom. Give us a call today to book your viewing!

Outside

Outside there is an allocated parking space for one vehicle and communal gardens. On the floor that the flat is on, there is an outside space which serves as an entrance hall to the front door of the apartment.

Floorplan

SECOND FLOOR
625 sq.ft. (58.1 sq.m.) approx.



TOTAL FLOOR AREA: 625 sq.ft. (58.1 sq.m.) approx.
Whilst every attempt has been made to ensure the accuracy of the floor plan, measurements of doors, windows, rooms and any other items are approximate and no responsibility is taken for any error, omission or misstatement. This plan is for illustrative purposes only and should be used as such by any prospective purchaser. The services, systems and appliances shown have not been tested and no guarantee is given to their operability or efficiency can be given.
Made with Metreplan 12/05



TO ARRANGE A VIEWING PLEASE CONTACT:
Tel: **01256 880001** or Email: **info@bridges.co.uk**



Important Notice - These particulars are set out as a general outline only for the guidance of intended purchasers/tenants and do not form part of any offer or contract and must not be relied upon as statements or representations of fact. Purchasers/Tenants must satisfy themselves by inspection or otherwise as to their correctness.