



Four Bedroom Detached House

Netherhouse Moor, Church Crookham, Fleet, Hampshire, GU51 5TY

Offers in Excess of: £850,000

- Four Bedrooms
- Lots of Living Space
- Study Room
- Private Garden
- Double Garage
- Driveway Parking
- Fantastic Location
- EPC: C (70)



Description

This superb family home is offered the market in immaculate condition, with ample living space, and ideally situated in the ever popular Netherhouse Moor development. The property offers a spacious living/dining area, which is double aspect, and leads through to a conservatory area. The space is perfect for entertaining guests, as well as family living. The property boasts a further reception room, which is currently set up as a study/playroom, with it having the ability to be set up for working from home, and as an area for children to play. The kitchen looks out into the private garden and offers a dining room area with patio doors opening out to the garden. The kitchen is modern and leads through to the utility room, which then leads through to the double garage. Upstairs there are four bedrooms, with three being double bedrooms and benefitting from built-in wardrobes. The principal bedroom also has a modern en suite that has been refurbished, and there is a main bathroom.

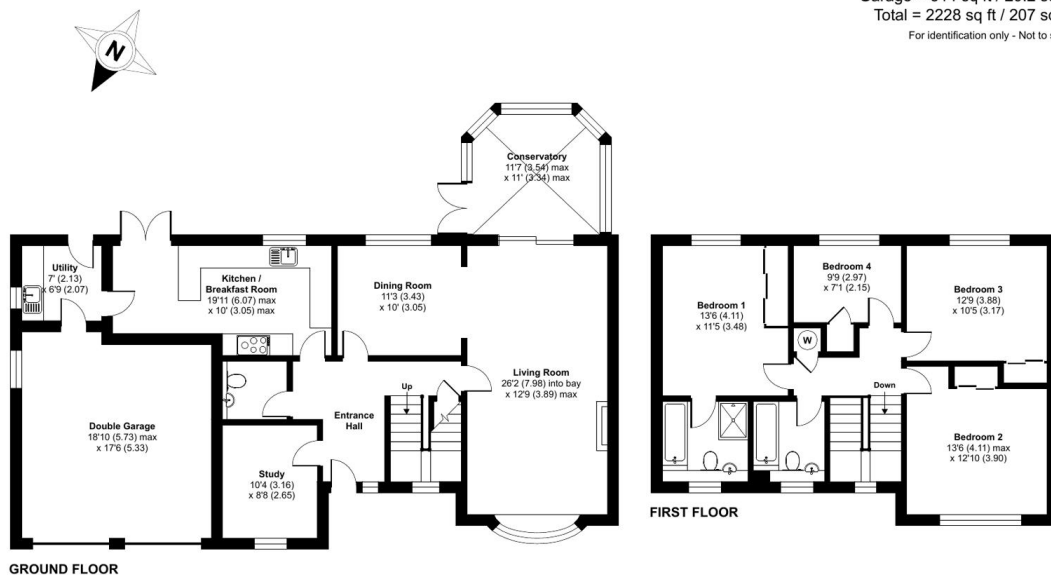
Outside

Situated in the popular Netherhouse Moor and tucked away in a quiet secluded spot within the road, this property is an ideal location. Driveway parking for multiple cars is offered, along with a front garden that is mainly laid to lawn. The property benefits from a spacious double garage and side access round to an extremely private rear garden. The rear garden is mostly laid to lawn with a patio area, perfect for al fresco dining, and a flower bed border which is well looked after.

Floorplan

Netherhouse Moor, Church Crookham, Fleet, GU51

Approximate Area = 1914 sq ft / 177.8 sq m
 Garage = 314 sq ft / 29.2 sq m
 Total = 2228 sq ft / 207 sq m
 For identification only - Not to scale



Floor plan produced in accordance with RICS Property Measurement 2nd Edition, incorporating International Property Measurement Standards (IPMS2 Residential). © nichecom 2025. Produced for Bridges Estate Agents. REF: 1248685



TO ARRANGE A VIEWING PLEASE CONTACT:
 Tel: **01252 361550** or Email: info@bridges.co.uk



Important Notice - These particulars are set out as a general outline only for the guidance of intended purchasers/tenants and do not form part of any offer or contract and must not be relied upon as statements or representations of fact. Purchasers/Tenants must satisfy themselves by inspection or otherwise as to their correctness.