



**NORTH ROAD | ASCOT**

  
**Platinum  
Homes**  
BY BRIDGES



## The Property

Situated in a quiet side street on the Ascot/Winkfield Row borders, this substantial detached family home occupies an overall plot measuring a fifth of an acre. Having been extended to now offer considerable space for entertaining, the accommodation comprises an open plan kitchen with space for a breakfast table, four reception rooms (two of which offer doors to the rear garden), a cloakroom, and a utility room.

To the first floor there are four generously proportioned bedrooms with an en suite bathroom and separate four piece family bath/shower room. Below the ground floor accommodation is a sizeable area of secure storage.

The property sits within easy reach of well regarded local schools which include LVS, Heathfield and Lambrook, as well as shops, amenities and the historic Windsor. Both Ascot and Bracknell mainline stations are within under two miles and both the M3/M4 motorways are less than six miles away.



## Outside

This property occupies an overall plot measuring 0.2 acres with the rear garden being mainly laid to lawn and offering decking to the rear.

There is substantial driveway parking to the front.



## Features

- Four Bedrooms
- Four Reception Rooms
- Two Bath/Shower Rooms
- Utility Room
- Driveway Parking
- Suitable for Commuters
- 0.2 Acre Plot
- EPC: TBC
- Council Tax Band: G

## Contact

**Philip Gascoyne**

[pgascoyne@platinumbybridges.co.uk](mailto:pgascoyne@platinumbybridges.co.uk)

01252 975501

  
**Platinum  
Homes**  
BY BRIDGES



# North Road, Ascot, Berkshire, SL5

Approximate Area = 1829 sq ft / 169.9 sq m

Limited Use Area(s) = 4 sq ft / 0.4 sq m

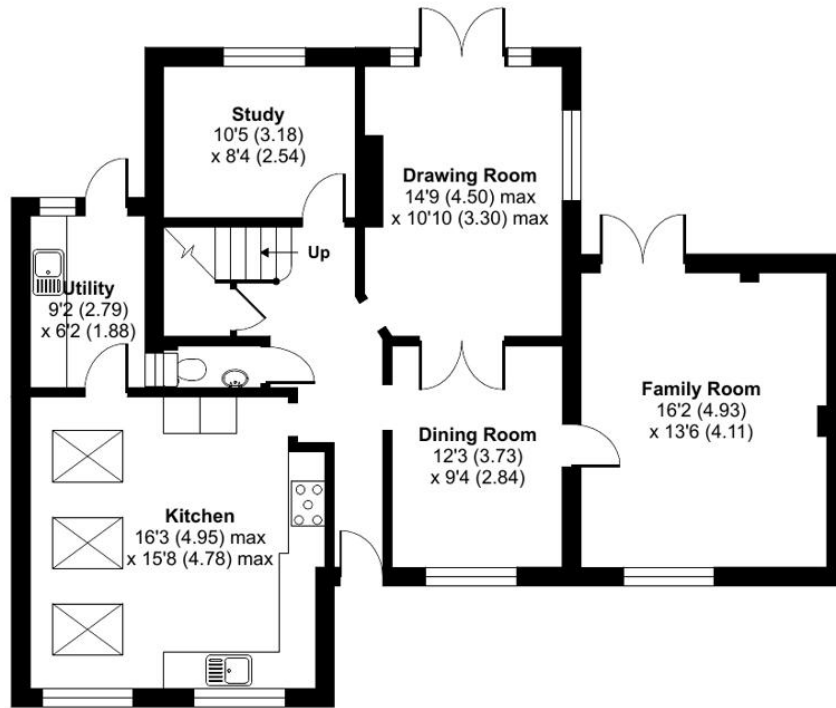
Outbuilding = 251 sq ft / 23.3 sq m

Total = 2084 sq ft / 193.6 sq m

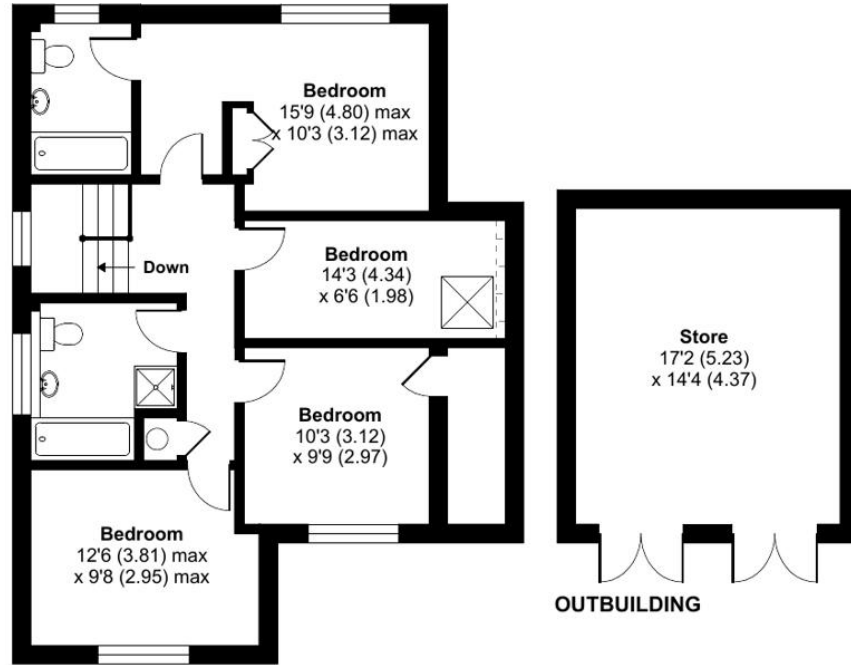
For identification only - Not to scale



Denotes restricted head height



GROUND FLOOR



FIRST FLOOR



Floor plan produced in accordance with RICS Property Measurement Standards incorporating International Property Measurement Standards (IPMS2 Residential). © nichecom 2024. Produced for Bridges Estate Agents Ltd (Platinum Homes). REF: 1088477

**Platinum  
Homes**  
BY BRIDGES

Important Notice - These particulars are set out as a general outline only for the guidance of intended purchasers and do not form part of any offer or contract and must not be relied upon as statements or representations of fact. Purchasers must satisfy themselves by inspection or otherwise as to their correctness.

