



## One Bedroom Ground Floor Apartment

**Chester Road, Ash, Surrey, GU12 6BA**

Offers in Excess of: £150,000

- One Bedroom Maisonette
- Patio Area
- Communal Garden
- Close to Rail Station
- Refitted Kitchen
- White Goods Included
- No Chain
- EPC: C (69)





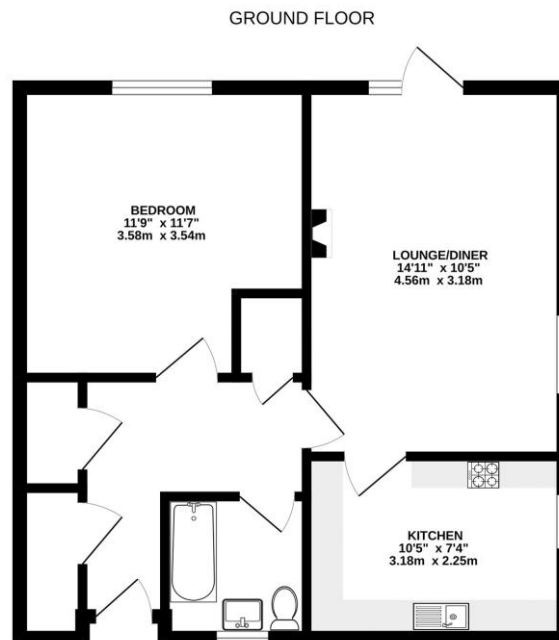
## Description

**\*\*NO ONWARD CHAIN\*\*** Located within a minutes' walk of Ash rail station is this spacious, ground floor one bedroom maisonette. The property boasts a spacious living room, large double bedroom, and a bathroom. In addition there is a kitchen with plenty of cupboard and worktop space, a new hotpoint double oven and white goods - which can be included in the sale. The maisonette also boasts ample storage with three built in storage cupboards inside and an external storage cupboard outside the front door. Call us today to book your viewing!

## Outside

Outside boasts a patio area off the living room, ideal for a small table and chairs - as well as an external storage cupboard. There is also a communal garden, which includes a washing line and on street parking.

## Floorplan



While every attempt has been made to ensure the accuracy of the floorplan contained here, measurements of doors, windows, rooms and any other items are approximate and no responsibility is taken for any errors, omissions or mis-statements. This plan is for illustrative purposes only and should be used as such by any prospective purchaser. The services, systems and appliances shown have not been tested and no guarantee as to their operability or efficiency can be given.  
Made with Mapbox 0.0.001



**TO ARRANGE A VIEWING PLEASE CONTACT:**  
Tel: **01252 361550** or Email: **info@bridges.co.uk**



**Important Notice -** These particulars are set out as a general outline only for the guidance of intended purchasers/tenants and do not form part of any offer or contract and must not be relied upon as statements or representations of fact. Purchasers/Tenants must satisfy themselves by inspection or otherwise as to their correctness.