



Two Bedroom End of Terrace House Millers Land Close, Ash, Surrey, GU12 6GA

Price: £400,000

- Two Double Bedrooms
- En Suite
- Parking
- New Home Warranty
- Downstairs Cloakroom
- Immaculate Throughout
- Close to Local Schools
- EPC: B (84)



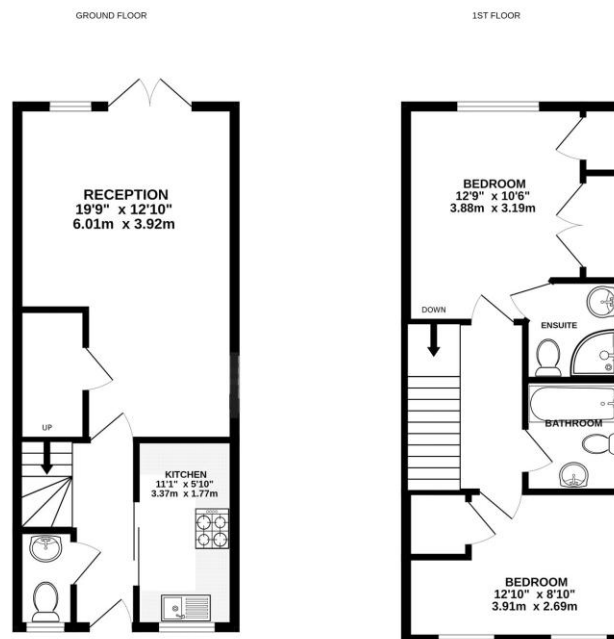
Description

Located in a quiet residential location is this immaculate two bedroom, freehold house which is also within close walking distance of the local schools, amenities and rail station. Downstairs boasts a spacious living room/diner with doors leading out into the garden - alongside a fully fitted kitchen, with plenty of work top and cupboard space. You will also find a downstairs cloakroom. Upstairs boasts two double bedrooms, an en suite shower room and family bathroom. Call us today to book your viewing!

Outside

Outside boasts parking for multiple vehicles and a recently landscaped private garden.

Floorplan



Whilst every attempt has been made to ensure the accuracy of the floorplan contained herein, measurements of doors, windows, rooms and any other items are approximate and no responsibility is taken for any error, omission or misstatement. This plan is for guidance purposes only and should be used as such by any prospective purchaser. The services, systems and appliances shown have not been tested and no guarantee as to their operability or efficiency can be given.
Made with Hozonapp 12/24



TO ARRANGE A VIEWING PLEASE CONTACT:
Tel: **01252 361550** or Email: **info@bridges.co.uk**



Important Notice - These particulars are set out as a general outline only for the guidance of intended purchasers/tenants and do not form part of any offer or contract and must not be relied upon as statements or representations of fact. Purchasers/Tenants must satisfy themselves by inspection or otherwise as to their correctness.