



Three Bedroom Semi-Detached House

White Cottage Close, Farnham, Surrey, GU9 0NL

Price: £440,000

- Three Bedrooms
- Kitchen/Diner
- Spacious Living Room
- First Floor Bathroom
- Landscaped Garden
- Off Road Parking
- 0.3 Miles from Farnham Park
- EPC: C (69)



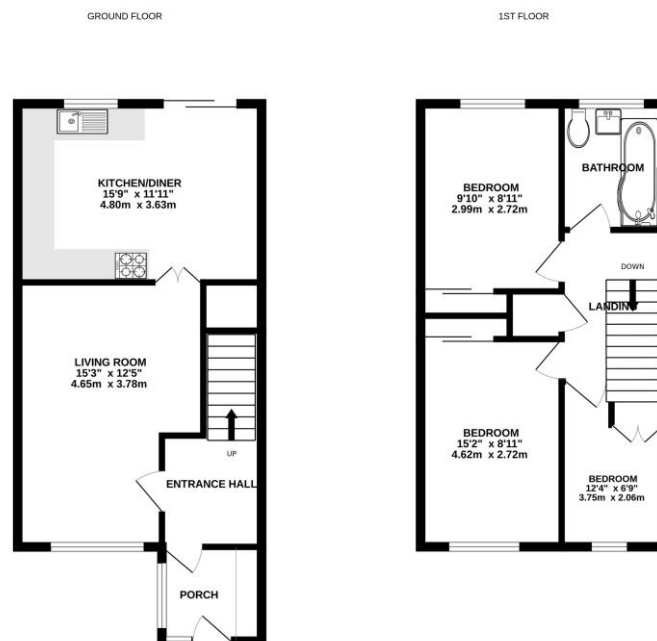
Description

Available to the market is this well presented three bedroom home situated in a sought after cul-de-sac just 0.3 miles from Farnham Park and walking distance to popular schools. The downstairs comprises a spacious and welcoming lounge area. There are double doors leading through to a kitchen/dining area, the kitchen having space for both integrated/freestanding appliances and the dining area providing access to the rear garden. The upstairs has three well proportioned bedrooms all featuring fitted wardrobes. Additionally, there is a modern three piece family bathroom suite.

Outside

To the front of the property is a paved driveway for multiple cars, with steps leading to the property. The rear garden is particularly private and presented over two tiers; a patio and artificial grass area across the lower tier, while the upper tier has a level laid to lawn area as well as mature shrubs and foliage around the borders. Additionally there is a shed for storage.

Floorplan



TO ARRANGE A VIEWING PLEASE CONTACT:
Tel: **01252 361550** or Email: **info@bridges.co.uk**



Important Notice - These particulars are set out as a general outline only for the guidance of intended purchasers/tenants and do not form part of any offer or contract and must not be relied upon as statements or representations of fact. Purchasers/Tenants must satisfy themselves by inspection or otherwise as to their correctness.