



One Bedroom Apartment

Victoria Road, Farnborough, Hampshire, GU14 7NS

Offers in excess of: £100,000 *Leasehold*

- One Double Bedroom Apartment
- Living/Dining Room
- Bedroom with Fitted Wardrobes
- Modern Fitted Kitchen and Shower Room
- Purpose Build Retirement Complex
- Ideally Positioned for Town and Station
- No Onward Chain
- EPC: C (77)



Description

Ideally located for Farnborough town centre and the mainline railway station, is this spacious one bedroom top floor over 60's retirement apartment.

The property offers a spacious living/dining room, a double bedroom with a built in wardrobe, a modern fitted kitchen with built in appliances, a bathroom with an easy access mobility bathtub, a communal reception room, a communal laundry room, and a communal garden. No onward chain complications!

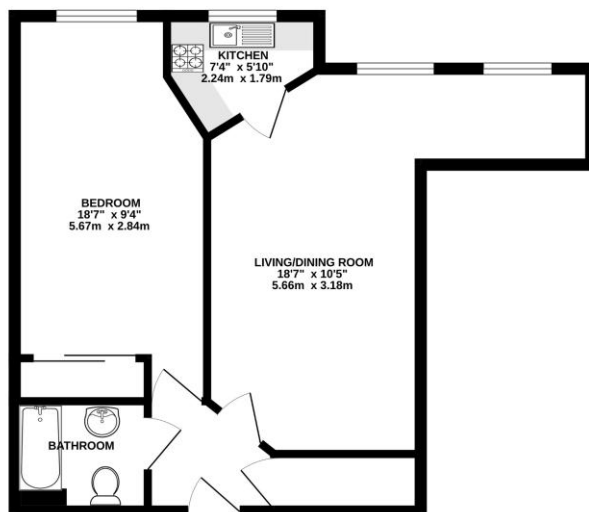
This flat is available to single purchasers over 60 years of age, and couples where if one member is over 60, the other can be over 55.

Outside

This property features communal gardens, mainly mature shrubs, with a patio area with seating.

Floorplan

THIRD FLOOR



While every attempt has been made to ensure the accuracy of the floorplan contained here, measurements of doors, windows, rooms and any other items are approximate and no responsibility is taken for any error, omission or mis-statement. This plan is for guidance purposes only and should be used in conjunction with the perspective pictures. The services, systems and appliances shown here are not been tested and no guarantee as to their operability or efficiency can be given. Made with Hergo 2024



TO ARRANGE A VIEWING PLEASE CONTACT:
Tel: **01252 361550** or Email: **info@bridges.co.uk**



Important Notice - These particulars are set out as a general outline only for the guidance of intended purchasers/tenants and do not form part of any offer or contract and must not be relied upon as statements or representations of fact. Purchasers/Tenants must satisfy themselves by inspection or otherwise as to their correctness.