

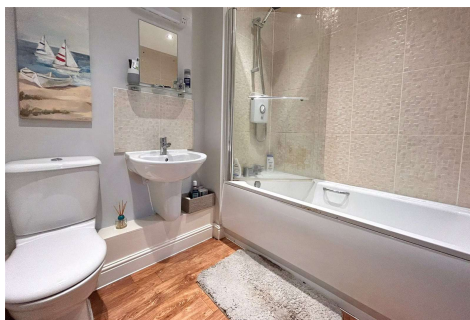
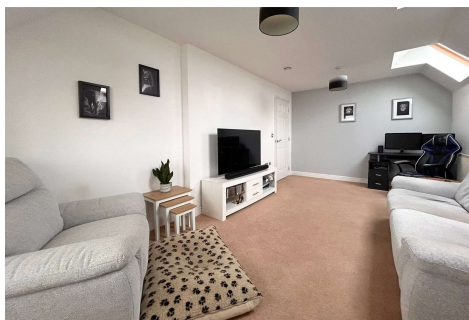


## One Bedroom Apartment

**Coppice Square, Aldershot, Hampshire, GU12 4GD**

Price: £166,500

- One Double Bedroom
- Closed Onward Chain
- 90% Shared Ownership
- Fitted Wardrobes
- Allocated Parking
- Communal Garden
- Secure Camera Entry Phone System
- EPC: C (77)



## Description

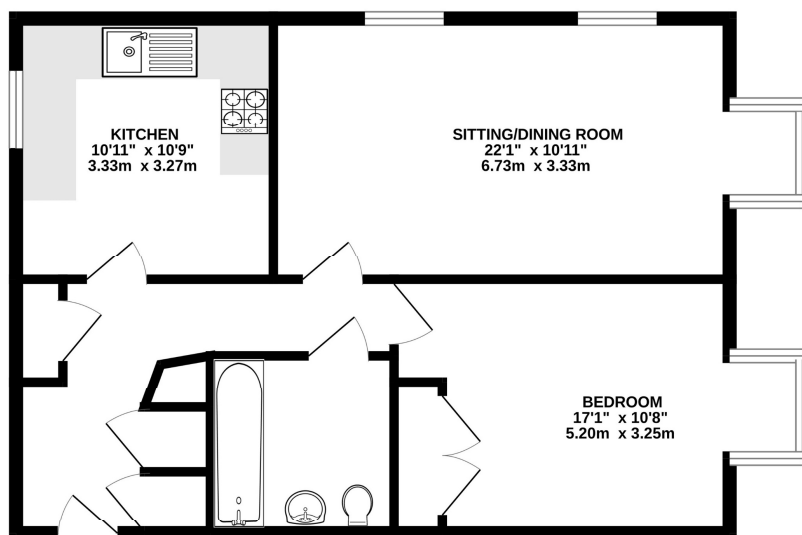
90% SHARED OWNERSHIP - A well presented apartment situated in the ever popular 'The Orchards' development. The development itself was built circa 14 years ago and offers lift access to higher floors. This apartment is excellently located for local amenities such as the train station and town centre. The property boasts one double bedroom, a modern kitchen and a bathroom. You will also find a spacious living room with a bright, airy feel - alongside an allocated parking space.

## Outside

The property offers allocated parking, a mainly laid to lawn communal garden and a park opposite for activities.

## Floorplan

### THIRD FLOOR



Whilst every attempt has been made to ensure the accuracy of the floorplan contained here, measurements of doors, windows, rooms and any other items are approximate and no responsibility is taken for any error, omission or mis-statement. This plan is for illustrative purposes only and should be used as such by any prospective purchaser. The services, systems and appliances shown have not been tested and no guarantee as to their operability or efficiency can be given.  
Made with Metropix ©2025



**TO ARRANGE A VIEWING PLEASE CONTACT:**  
Tel: **01252 361550** or Email: **info@bridges.co.uk**



**Important Notice** - These particulars are set out as a general outline only for the guidance of intended purchasers/tenants and do not form part of any offer or contract and must not be relied upon as statements or representations of fact. Purchasers/Tenants must satisfy themselves by inspection or otherwise as to their correctness.