

Two Bedroom Apartment

Shetland Road, Basingstoke, Hampshire, RG24 9WH

Price: £190,000

- Two Bedrooms
- Secure Entry Phone System
- Lift Access
- Excellent Condition
- Communal Parking
- Close to Great Amenities
- Good Schools Nearby
- EPC: C (80)



Description

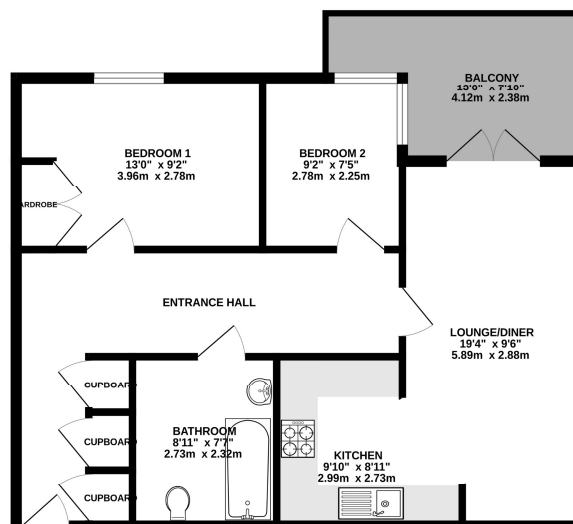
Located in the popular area of Popley, this two bedroom purpose built flat is in excellent condition throughout. Sitting on the fifth floor, the property offers some excellent elevated views from the balcony and windows. With easy lift access, the stairs are no bother at all, and there is ample communal parking for all residents to keep things convenient. The layout of this flat is exceptionally practical, from the wide and long hallway through to the lounge/diner with an offset kitchen area that feels separate to the main living area. There is a huge amount of storage with this apartment and both bedrooms are of a great size, with the main bedroom benefitting from built in wardrobes. These are supported by a generous bathroom which is in great condition also.

Outside

Situated on Shetland Road in Popley, the building is local to several convenience stores, a primary school, take away shops, a post office, and a pharmacy. The Basingstoke town centre is less than two miles away, housing the Festival Place Shopping Centre and train station with a direct line to London Waterloo. There are bus stops near to the property, providing regular services into town and across Basingstoke. The home is near to a grand open field and woodland area providing opportunity for fresh air and walks. The location also benefits from being close to Chineham Business Park and Chineham shopping centre offering a variety of shops and stores. There is easy access to the A30 to Reading and M3 via car.

Floorplan

GROUND FLOOR



While every effort has been made to ensure the accuracy of the floorplan contained herein, measurements of doors, windows, rooms and any other items are approximate and no responsibility is taken for any error, omission or mis-statement. This plan is for illustrative purposes only and should be used as such for any prospective purchaser. The services, systems and appliances shown here are not intended and no guarantee as to their operability or efficiency can be given. Made with floorplan 12/2014



TO ARRANGE A VIEWING PLEASE CONTACT:
Tel: **01256 880001** or Email: **info@bridges.co.uk**



Important Notice - These particulars are set out as a general outline only for the guidance of intended purchasers/tenants and do not form part of any offer or contract and must not be relied upon as statements or representations of fact. Purchasers/Tenants must satisfy themselves by inspection or otherwise as to their correctness.