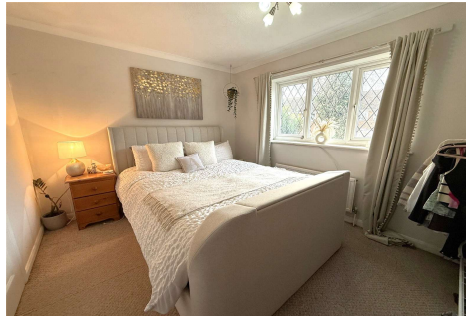


Two Bedroom End of Terrace House Shepherds Chase, Bagshot, Surrey, GU19 5QX

Offers in excess of: £350,000

- Two Bedrooms
- End of Terrace Home
- Private South Westerly Facing Garden
- Two Allocated Parking Spaces
- Freehold
- Located in a Quiet Close
- Close to Local Shops
- EPC: C (72)



Description

Situated in a quiet close on the popular Connaught Park in Bagshot is this stunning two bedroom home. When you enter there is a spacious hallway with access to the cloakroom, the kitchen is situated to the front, and there is a good sized living/dining space to the rear with French doors opening out to the rear garden. Upstairs, you have the family bathroom and two double bedrooms, one with built in storage. The property is situated just a short walk from Bagshot village centre with its array of shops, restaurants, and local amenities. Bagshot also offers direct trains into London Waterloo and the village benefits from excellent road connections to the M3, M25, and M4 motorways, and lastly Heathrow Airport. There are many excellent state and independent schools in the area catering for boys and girls of all ages. Camberley town centre is approximately three miles away and offers many restaurants, shops, a cinema, and a recently refurbished leisure centre.

Outside

To the front of the house there are two allocated parking spaces, along with side access to the south westerly facing garden which is low maintenance and ideal for summer BBQs! There is an additional storage shed which is included.

Floorplan



TO ARRANGE A VIEWING PLEASE CONTACT:

Tel: 01276 685544 or Email:
camberley@bridges.co.uk



Important Notice - These particulars are set out as a general outline only for the guidance of intended purchasers/tenants and do not form part of any offer or contract and must not be relied upon as statements or representations of fact. Purchasers/Tenants must satisfy themselves by inspection or otherwise as to their correctness.