

Two Bedroom Apartment

New Street, Basingstoke, Hampshire, RG21 7BT

Price: £225,000

- Two Bedrooms
- First Floor Apartment
- Spacious Living Room
- Lift Access
- Secure Parking
- Town Centre Location
- Estimated Rental Price: £1250pcm
- EPC: C (75)



Description

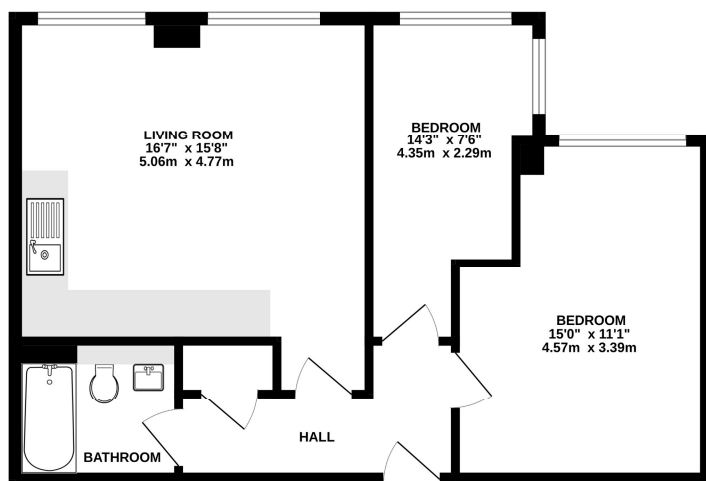
Bridges Estate Agents proudly present this exceptional two bedroom town centre apartment, available with no onward chain. Boasting secure underground parking, this property offers a spacious layout that includes two generously sized bedrooms, a spacious open plan living room seamlessly integrated with modern kitchen fittings. A wide hallway with a convenient storage cupboard complements the accommodation, alongside a modern three piece bathroom. Additional features such as double glazing and lift access to all floors enhance the comfort and convenience of this desirable residence. Converted in 2017 into a selection of one and two bedroom apartments all very uniquely designed and with amazingly high ceilings and good sized picture windows bringing in a great amount of light into the apartments and this one is no different.

Outside

This is a perfect first time purchase or an ideal investment opportunity due to the fantastic town centre location and the size of this apartment. Situated on the first floor with direct access from the underground parking into the entrance lobby via the lifts or secure outside entrance stairwell. The parking is accessed via an electrically operated shutter bay door giving complete secure parking. The entrance is also securely operated, and the lobby is a lovely stylish space. Verum House is a modern development located in Basingstoke Town Centre where there is a wide range of shopping and recreational facilities as well as the mainline railway station which is well served with regular commuter services to London Waterloo in approximately 46 minutes. The M3 motorway runs just south of Basingstoke with access to London and The South.

Floorplan

1ST FLOOR



While every attempt has been made to ensure the accuracy of the floorplan contained here, measurements of doors, windows, rooms and any other items are approximate and no responsibility is taken for any error, omission or mis-statement. This plan is for illustrative purposes only and should be used as such by any prospective purchaser. The services, systems and appliances shown have not been tested and no guarantee as to their operability or efficiency can be given.
Made with Metaplan 02025



TO ARRANGE A VIEWING PLEASE CONTACT:
Tel: **01256 880001** or Email: **info@bridges.co.uk**



Important Notice - These particulars are set out as a general outline only for the guidance of intended purchasers/tenants and do not form part of any offer or contract and must not be relied upon as statements or representations of fact. Purchasers/Tenants must satisfy themselves by inspection or otherwise as to their correctness.