



## Three Bedroom Semi-Detached House

**Closeworth Road, Farnborough, Hampshire, GU14 6JH**

Guide Price: £450,000

- Three Bedrooms
- Victorian Family Home
- Driveway Parking
- Popular North Camp Village
- Local Schools
- Generous Rear Garden Approximately 90 Feet
- Potential To Extend (STPP)
- EPC: F (37)





## Description

An extended Victorian family home in the sought after village of North Camp and within walking distance to local schools, amenities, playing fields, and close to multiple train stations.

The spacious ground floor compromises an entrance porch, a hallway, an inviting lounge/dining room with a feature fireplace, and continues through to the kitchen/breakfast room leading out a generous rear garden benefitting from a decked seating area and well designed lawn.

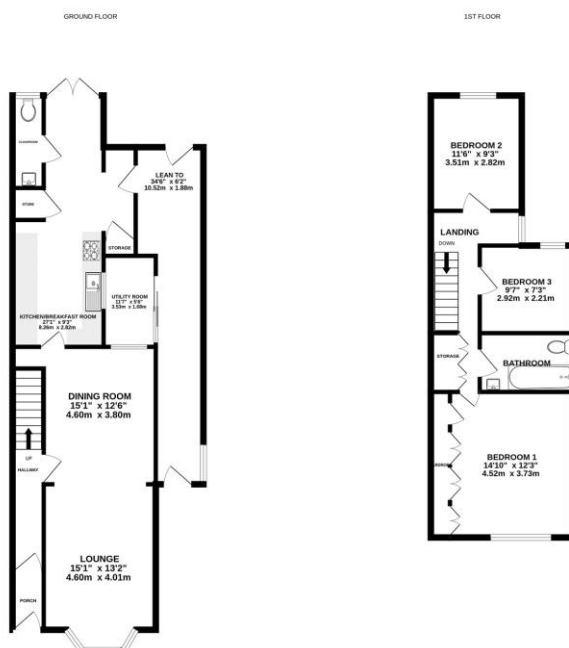
The ground floor also offers ample storage throughout, a cloakroom, a lean to, a utility room, and has retained many character features expected within a Victorian family home.

Upstairs, the property offers three good sized bedrooms, a bright well presented family bathroom and continues with the generous amount of wardrobe space.

## Outside

To the front, there is a well maintained driveway for multiple vehicles, to the rear is a generous garden that offers a decked seating area, an expansive lawn space and a feature well.

## Floorplan



Whilst every attempt has been made to ensure the accuracy of the floorplan contained here, measurements of doors, windows, rooms and any other items are approximate and no responsibility is taken for any error, omission or misstatement. This plan is for illustrative purposes only and should be used as a guide to any prospective purchaser. The services, systems and appliances shown here are not tested and no guarantee is given as to their quantity, or efficiency can be given. Made with Hectagame C2024



TO ARRANGE A VIEWING PLEASE CONTACT:  
Tel: **01252 361550** or Email: **info@bridges.co.uk**



Important Notice - These particulars are set out as a general outline only for the guidance of intended purchasers/tenants and do not form part of any offer or contract and must not be relied upon as statements or representations of fact. Purchasers/Tenants must satisfy themselves by inspection or otherwise as to their correctness.