



## Two Bedroom Terraced House

**Minden Court, Deepcut, Camberley, Surrey, GU16 6EE**

Price: £395,000

- Two Double Bedrooms
- Mid-Terrace House
- Open Plan Kitchen/Living/Dining Area
- Ground Floor Cloakroom
- Modern Family Bathroom
- Private Garden Backing on to Woodlands
- Secluded Cul-de-Sac
- EPC: B (83)



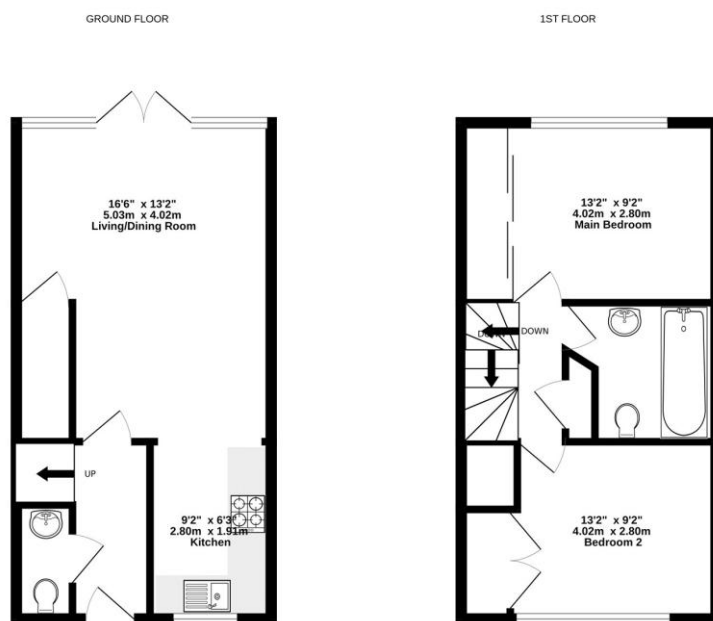
## Description

A FANTASTIC FIRST HOME! This beautifully presented "show home condition" terraced home is nestled within a quiet cul-de-sac backing onto woodland. Accommodation is comprising an entrance hall, cloakroom, and a fully integrated kitchen opening into an open plan living/dining room with double doors leading onto the rear garden. To the first floor, there are two double bedrooms with built-in wardrobes and a modern family bathroom.

## Outside

The rear garden is super low maintenance with artificial grass and two areas to entertain guests, being the patio and the decked area, which backs onto woodland via the gate. There is one parking bay to the front with visitor parking bays available.

## Floorplan



Whilst every attempt has been made to ensure the accuracy of the floorplan contained here, measurements of doors, windows, rooms and any other items are approximate and no responsibility is taken for any error, omission or mis-statement. This plan is for illustrative purposes only and should be used as such by any prospective purchaser. The services, systems and appliances shown have not been tested and no guarantee as to their operability or efficiency can be given.  
Made with Metropac C5024



TO ARRANGE A VIEWING PLEASE CONTACT:  
Tel: **01252 361550** or Email: **info@bridges.co.uk**



Important Notice - These particulars are set out as a general outline only for the guidance of intended purchasers/tenants and do not form part of any offer or contract and must not be relied upon as statements or representations of fact. Purchasers/Tenants must satisfy themselves by inspection or otherwise as to their correctness.