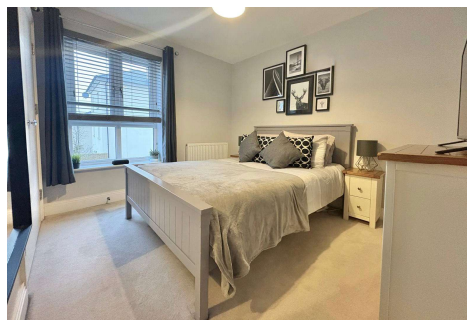
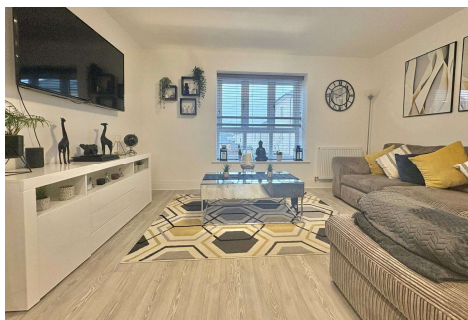
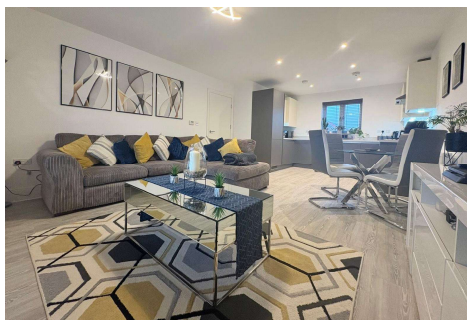


## One Bedroom Apartment

**Fire Station Road, Wellesley, Aldershot, Hampshire, GU11 4ER**

**Price: £220,000**

- One Double Bedroom
- Stunning Apartment
- Immaculately Presented Throughout
- Allocated Parking
- Integrated High Gloss Kitchen
- Sought After Development
- Must be Seen to be Appreciated
- EPC: B (81)



## Description

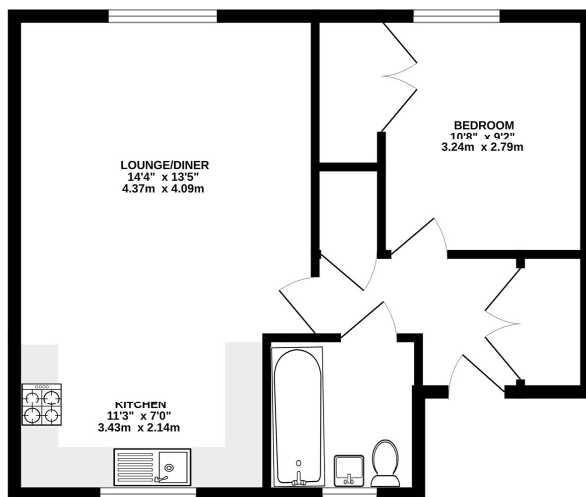
Situated in the heart of Wellesley, this beautifully presented apartment is offered to the market for the first time since being constructed by Cala Homes. Having the benefit of a secured private entry system, this property is ideal for first time buyers and local home movers. On entering the property, you are welcomed by a large hallway with two built in storage cupboards. The property benefits from a bathroom, a double bedroom - with built in storage and an open plan living space. This property is just under a mile from Aldershot train station, which offers direct links to London Waterloo in under an hour. Give us a call today to book your viewing!

## Outside

Just a short walk away from the Gun Hill development, with picturesque viewpoints, relaxing country walks, and a short walk to the mainline train station.

## Floorplan

GROUND FLOOR



Whilst every attempt has been made to ensure the accuracy of the floorplan contained herein, measurements of doors, windows, rooms and any other items are approximate and no responsibility is taken for any error, omission or mis-statement. This plan is for illustrative purposes only and should be used as a guide only by prospective purchasers. The services, appliances and appliances shown have not been tested and no guarantee as to their operability or efficiency can be given. Measured with Metrease (2020).



**TO ARRANGE A VIEWING PLEASE CONTACT:**  
Tel: **01252 361550** or Email: **info@bridges.co.uk**



**Important Notice** - These particulars are set out as a general outline only for the guidance of intended purchasers/tenants and do not form part of any offer or contract and must not be relied upon as statements or representations of fact. Purchasers/Tenants must satisfy themselves by inspection or otherwise as to their correctness.