

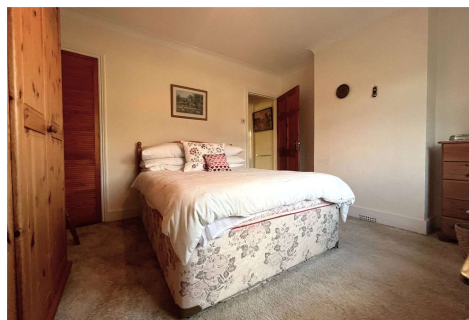


Two Bedroom Terraced House

Frimley Road, Ash Vale, Surrey, GU12 5PD

Offers in excess of: £300,000

- Two Double Bedrooms
- Victorian Home
- Two Generous Reception Rooms
- Two Ample Double Bedrooms
- Vast West Facing Garden
- Potential to Extend STPP
- Close to Ash Vale Train Station
- EPC: D (65)



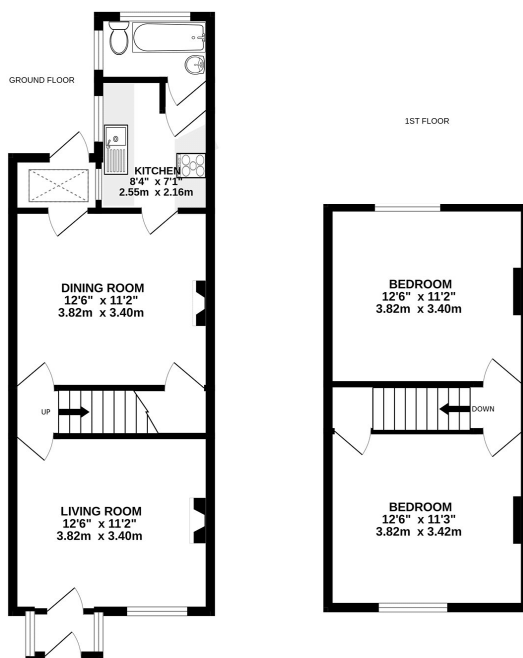
Description

Being sold with no onward chain complications is this charming, two double bedroom Victorian home - located within walking distance of Ash Vale mainline train station. This smashing home has two generous reception rooms, a kitchen and a bathroom on the ground floor. Upstairs, there are two ample double bedrooms. With a vast west facing garden, which enjoys beautiful sunsets, there is ample scope for improvement/extension, subject to the usual permissions. This superb location is also very close to Holly Lodge Primary School and the picturesque Basingstoke Canal - as well as Ash Ranges, with 1000s of acres of heathland to explore! Call us today to come and take a look.

Outside

To the front is a garden area which is enclosed by a brick wall – there is the potential to create driveway parking subject to the usual consents. To the rear is a vast landscaped garden which backs onto a wooded area, giving a lovely peaceful setting. Facing west there is lots of beautiful sunshine to be enjoyed and some wonderful sunsets. There is a patio area accessed directly from the back of the house, which is a great place for outside entertaining. There is a generous section of well kept lawn and mature borders, with a smashing array of mature plants and shrubs. All enclosed by smart wood panel fencing.

Floorplan



While every attempt has been made to ensure the accuracy of the floorplan contained here, measurements of doors, windows, rooms and any other items are approximate and no responsibility is taken for any error, omission or mis-statement. This plan is for illustrative purposes only and should be used as such by any prospective purchaser. The services, systems and appliances shown have not been tested and no guarantee as to their operability or efficiency can be given.
Made with Metronix i2000



TO ARRANGE A VIEWING PLEASE CONTACT:
Tel: **01252 361550** or Email: **info@bridges.co.uk**



Important Notice - These particulars are set out as a general outline only for the guidance of intended purchasers/tenants and do not form part of any offer or contract and must not be relied upon as statements or representations of fact. Purchasers/Tenants must satisfy themselves by inspection or otherwise as to their correctness.