



Three Bedroom Semi-Detached House

Beales Lane, Wrecclesham, Farnham, Surrey, GU10 4PY

Guide Price: £475,000

- Three Bedrooms
- Spacious Living Room
- Private Rear Garden
- Allocated Parking
- Gated Development
- Close to Popular Schools
- Contemporary Living
- EPC: C (74)



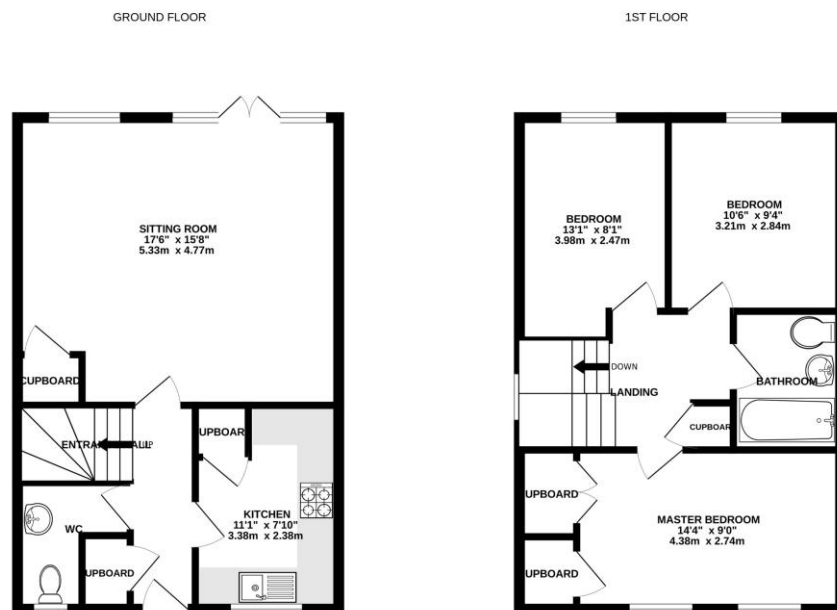
Description

A beautifully presented three-bedroom semi-detached family home which has been finished to an excellent standard, situated in an exclusive gated development on the South side of Farnham. On the ground floor, there is a good size entrance hall with oak flooring, access to the kitchen, a cloakroom, and glazed double doors into the living room. The cloakroom is fitted with a modern white suite with tiled flooring, and the impressive 17' double aspect living room has a contemporary fireplace and French doors onto the rear garden. The 11' kitchen has been fitted with a range of light wooden shaker style units, there is a built-in stainless-steel double oven with a five-ring stainless steel hob, a fitted washer/dryer, and tiled flooring. On the first floor, there are three well-proportioned bedrooms with a fitted double wardrobe to the principal bedroom, and a well-presented three-piece family bathroom suite.

Outside

Outside, the property is approached through electric gates which lead onto the parking area. There are two allocated parking spaces to the front of the property with raised shrub beds. The enclosed southerly rear garden has steps up to a paved patio terrace and lawn areas.

Floorplan



Whilst every attempt has been made to ensure the accuracy of the floorplan contained here, measurements of doors, windows, rooms and any other items are approximate and no responsibility is taken for any error, omission or mis-statement. This plan is for illustrative purposes only and should be used as such by any prospective purchaser. The services, systems and appliances shown have not been tested and no guarantee as to their operability or efficiency can be given.
Made with Metropix 2/2023



TO ARRANGE A VIEWING PLEASE CONTACT:
Tel: **01252 361550** or Email: **info@bridges.co.uk**



Important Notice - These particulars are set out as a general outline only for the guidance of intended purchasers/tenants and do not form part of any offer or contract and must not be relied upon as statements or representations of fact. Purchasers/Tenants must satisfy themselves by inspection or otherwise as to their correctness.