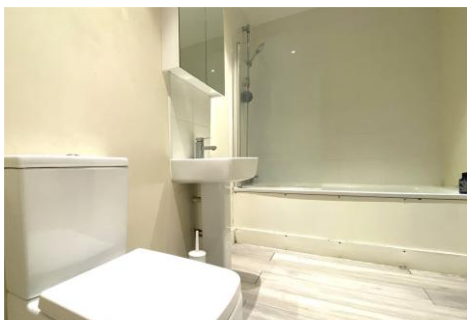
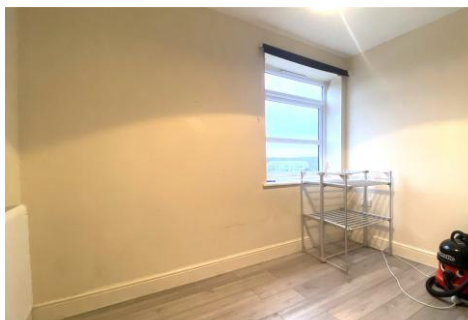


Two Bedroom Apartment

London Road, Blackwater, Camberley, Hampshire, GU17 0AA

Guide Price: £160,000

- Two Bedrooms
- For Sale by Modern Auctions - T&C's Apply
- Subject to Reservation Price
- Buyers Fees Apply
- Open plan lounge/Kitchen
- Modern Kitchen
- Allocated Parking
- EPC: D (56)



Description

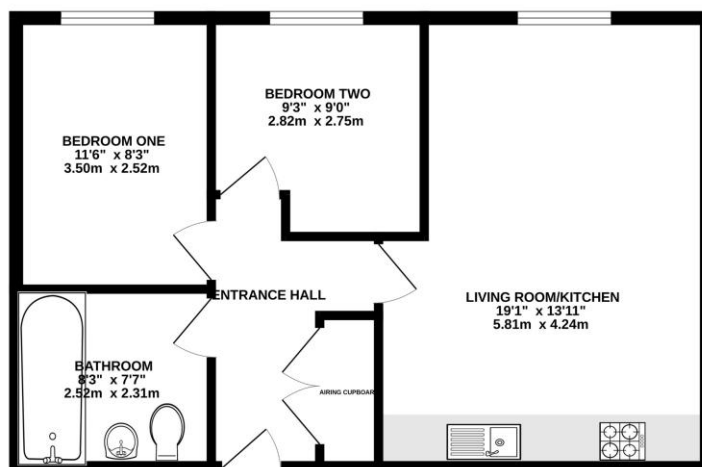
Offered to the market with no onward chain stands this modern third floor apartment located within walking distance to Blackwater train station. The spacious accommodation comprises a spacious open plan kitchen/living room with integrated appliances, two well proportioned bedrooms, and a modern fitted bathroom. The property is finished to a high standard throughout. Further benefits to note include electric heating, wood effect flooring and new carpets, contemporary bathroom and kitchen fittings, double glazing, and allocated parking. The property also offers easy access to the M3, M25 and A30. Camberley town centre is approximately two miles away.

Outside

Located to the rear of the property is allocated parking for one car.

Floorplan

THIRD FLOOR



Whilst every attempt has been made to ensure the accuracy of the floorplan contained here, measurements of doors, windows, rooms and any other items are approximate and no responsibility is taken for any error, omission or mis-statement. This plan is for illustrative purposes only and should be used as such by any prospective purchaser. The services, systems and appliances shown have not been tested and no guarantee as to their operability or efficiency can be given.
Made with Metropac C3022



TO ARRANGE A VIEWING PLEASE CONTACT:

Tel: 01276 685544 or Email:
camberley@bridges.co.uk



Important Notice - These particulars are set out as a general outline only for the guidance of intended purchasers/tenants and do not form part of any offer or contract and must not be relied upon as statements or representations of fact. Purchasers/Tenants must satisfy themselves by inspection or otherwise as to their correctness.