



One Bedroom Maisonette

Francis Court, Elmsleigh Road, Farnborough, GU14 0ET

Offers in excess of: £190,000

- First Floor with Private Entrance
- Desirable Residential Road
- Short Walk to Shops and Cafes
- Share of Freehold
- Communal Lawn Gardens
- Allocated and Visitors parking
- Recent Rental Return £975pcm
- EPC: C (69)



Description

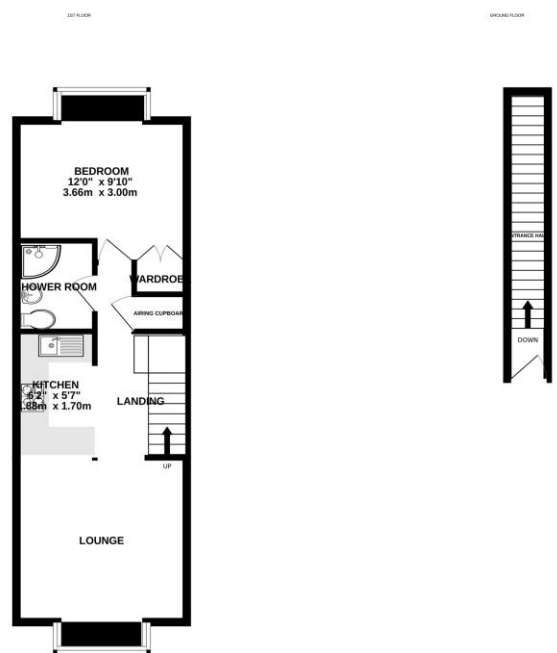
Situated in a desirable residential road set away from traffic yet close to local shops and cafes, this appealing, well presented first floor maisonette has its own covered entrance and provides good all around living space. The bright living/dining room joins with an open plan kitchen, there is a double bedroom with a fitted wardrobe and a modern shower room.

Located only around 0.7 mile from Farnborough station and town centre, the property benefits from a share of Freehold, residents private parking and well maintained communal gardens. The flat is available with no onward chain and has been achieving a rental of £975 per calendar month.

Outside

To the rear of the development there is a communal residents carpark offering ample parking as well as communal gardens.

Floorplan



Whilst every attempt has been made to ensure the accuracy of the floorplan contained here, measurements of doors, windows, rooms and any other items are approximate and no responsibility is taken for any errors, omissions or misstatements. This plan is for guidance purposes only and should be used in conjunction with any prospective purchase. The services, systems and appliances shown here are not shown to scale and are not guaranteed. All to their responsibility or efficiency can be given. Made with Hoxby 12/2021



TO ARRANGE A VIEWING PLEASE CONTACT:
 Tel: 01252 361550 or Email: info@bridges.co.uk



Important Notice - These particulars are set out as a general outline only for the guidance of intended purchasers/tenants and do not form part of any offer or contract and must not be relied upon as statements or representations of fact. Purchasers/Tenants must satisfy themselves by inspection or otherwise as to their correctness.