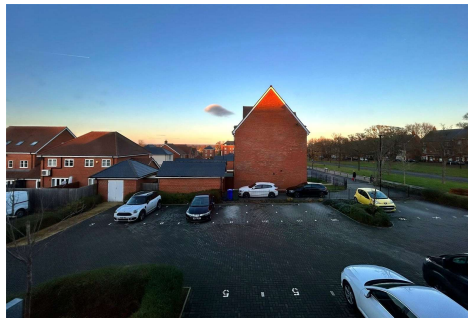


One Bedroom Apartment

Ensor House, 17 Corunna Avenue, Wellesley, Aldershot, GU11 4BJ

Price: £150,000

- One Double Bedroom
- First Floor Apartment
- No Onward Chain
- Ideal First Time Buy
- Allocated Parking
- Rental Share: £134.69pcm
- Situated in a Popular Development
- EPC: B (84)



Description

75% Shared Ownership

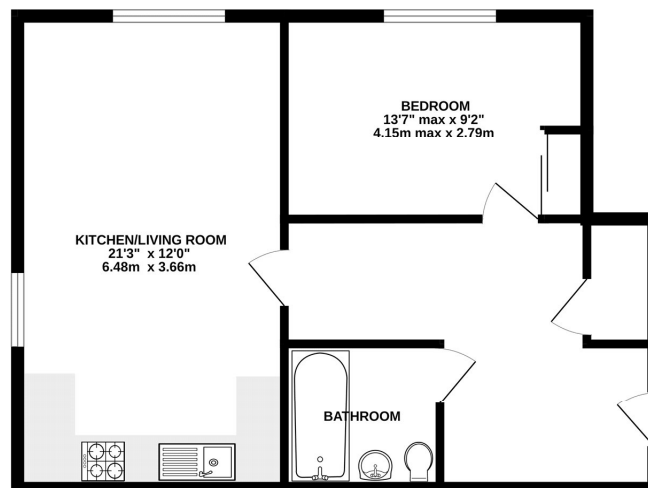
NO ONWARD CHAIN - Wellesley is an exciting development in Rushmoor, located in a beautiful part of northeast Hampshire, with easy access to the countryside and London. Built to an exceptional quality, this first floor stunning apartment is light and airy. The accommodation boasts an open plan kitchen/lounge, a double bedroom and a family bathroom. The property further benefits from allocated parking. Bridges are delighted to offer this immaculately presented property to the market and highly recommend viewing, especially as it is ideally situated for the A331 with good commuter links to London.

Outside

There is an allocated parking bay with the property, in addition to non permit, on street parking.

Floorplan

GROUND FLOOR



Whilst every attempt has been made to ensure the accuracy of the floorplan contained here, measurements of doors, windows, rooms and any other items are approximate and no responsibility is taken for any error, omission or mis-statement. This plan is for illustrative purposes only and should be used as such for any prospective purchaser. The services, systems and appliances shown have not been tested and no guarantee as to their operability or efficiency can be given.
Issue with reference 120294



TO ARRANGE A VIEWING PLEASE CONTACT:
Tel: **01252 361550** or Email: **info@bridges.co.uk**



Important Notice - These particulars are set out as a general outline only for the guidance of intended purchasers/tenants and do not form part of any offer or contract and must not be relied upon as statements or representations of fact. Purchasers/Tenants must satisfy themselves by inspection or otherwise as to their correctness.