



KNIGHTSBRIDGE ROAD | CAMBERLEY


**Platinum
Homes**
BY BRIDGES



The Property

Situated in one of Camberley's most prestigious tree lined locations is this detached family home that has been refurbished to a high standard throughout and occupies a plot measuring a fifth of an acre.

The ground floor boasts an impressive entrance hall accessed via double doors that leads to an open plan reception room measuring 25' and a 20' dining room just beyond. There is a separate family room, cloakroom, and 23' kitchen/breakfast room with a lantern style skylight and doors to the rear garden.

To the first and second floors there are five double bedrooms and four bath/shower rooms, three of which are en suites. The principal bedroom is particularly impressive, measuring 19' x 16' with a dressing room as well as en suite.

Camberley town centre and railway station are both within walking distance, with swathes of nearby woodland being ideal for dog walkers. There are also numerous schools nearby, as well as golf clubs and Pennyhill Park.

Outside

Externally, the garden is mainly laid to lawn with a spacious area that is suitable for garden furniture.

Driveway parking for several vehicles is located to the front of the home, along with a single garage.





Features

- Five Double Bedrooms
- Three Reception Rooms
- 23' Kitchen/Breakfast Room
- Four Bath/Shower Rooms
- 0.2 Acre Plot
- Driveway Parking
- Single Garage
- EPC: C (78)
- Council Tax Band: G

Contact

Philip Gascoyne

pgascoyne@platinumbybridges.co.uk

01252 975501



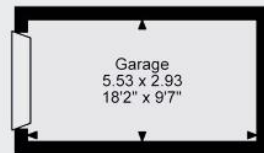
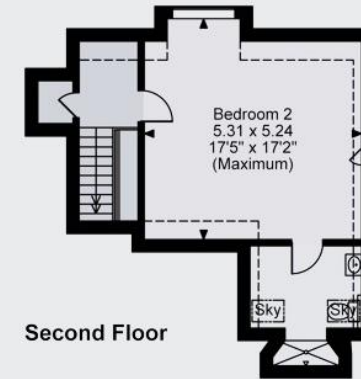
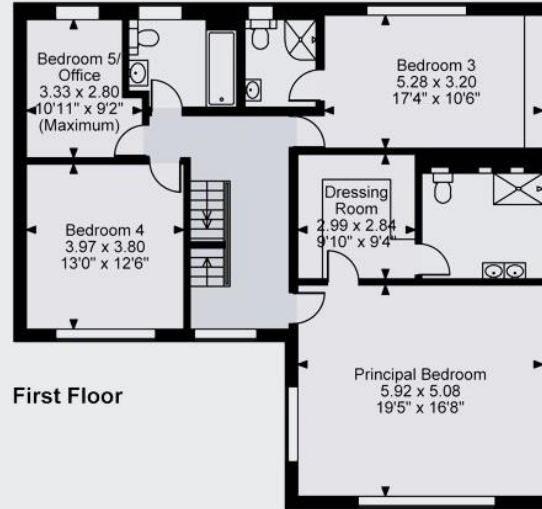
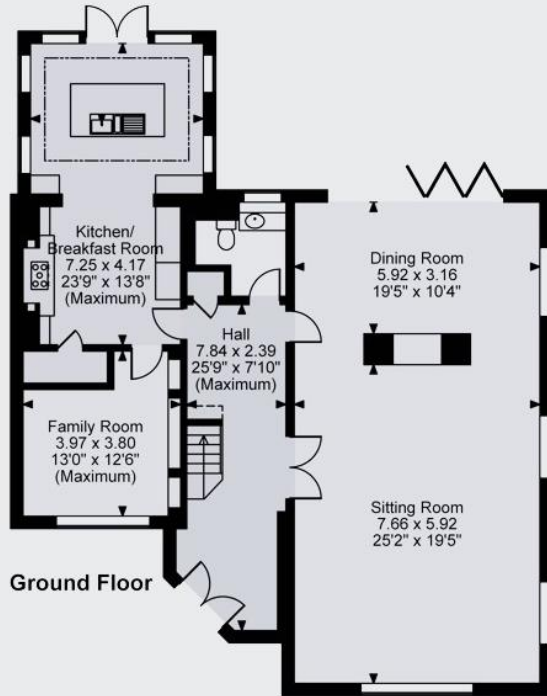
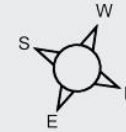

**Platinum
Homes**
BY BRIDGES

Orchard End Knightsbridge Road, Camberley, Surrey

Main House internal area 3,116 sq ft (290 sq m)

Garage internal area 174 sq ft (16 sq m)

Total internal area 3,290 sq ft (306 sq m)



FOR ILLUSTRATIVE PURPOSES ONLY - NOT TO SCALE

The position & size of doors, windows, appliances and other features are approximate only.

□ □ □ Denotes restricted head height

© ehouse. Unauthorised reproduction prohibited. Drawing ref. dig/8626599/NJD



Floor plan produced in accordance with RICS Property Measurement Standards incorporating International Property Measurement Standards (IPMS2 Residential). © nchecon 2024. Produced for Bridges Estate Agents Ltd (Platinum Homes). REF: 1088477



Important Notice - These particulars are set out as a general outline only for the guidance of intended purchasers and do not form part of any offer or contract and must not be relied upon as statements or representations of fact. Purchasers must satisfy themselves by inspection or otherwise as to their correctness.

