



WARFIELD PARK | WARFIELD


**Platinum
Homes**
BY BRIDGES



The Property

Situated within close proximity of popular local schools, this superb detached family home spans over 3,000 square feet and dates back to the mid-18th Century. Offering a totally unique layout, one of the standout features of the home is the main reception room with its double height ceiling and grand fireplace. Additionally, there is a dining room and a beautiful open plan 'L' shaped kitchen/orangery that spans circa 25' x 25' and offers an abundance of natural light plus the utility room.

The flexible layout could accommodate up to six bedrooms, but the current owners use three as bedrooms, with two studies and a dressing room. There is an en suite shower room to bedroom one, as well as a family bathroom and a further shower room most of which is approached via the grand entrance hall.

Standing on the site of the original Warfield Park Mansion, the house was rebuilt by John Walsh in 1766, and the house today retains original walls dating back to that time. The house was also used in World War Two as an important telecommunications site. With the additions made by the owners sympathetic to the original features and rich history, this property is a truly unique family home.

Outside

Boasting an overall plot measuring 0.29 acres, and with a high degree of privacy to all sides, the rear garden is mainly laid to lawn with an area of patio and a hot tub.

To the front is driveway parking for several vehicles and a detached double garage, approached via a five bar gate.



Features

- Five/Six Bedrooms
- Three/Four Reception Rooms
- Three Bath/Shower Rooms
- Stunning Main Reception Room
- Beautiful Kitchen/Orangery
- Utility Room
- Detached Double Garage
- EPC : TBC
- Council Tax Band : F

Contact

Philip Gascoyne

pgascoyne@platinumbybridges.co.uk

01252 975501


**Platinum
Homes**
BY BRIDGES



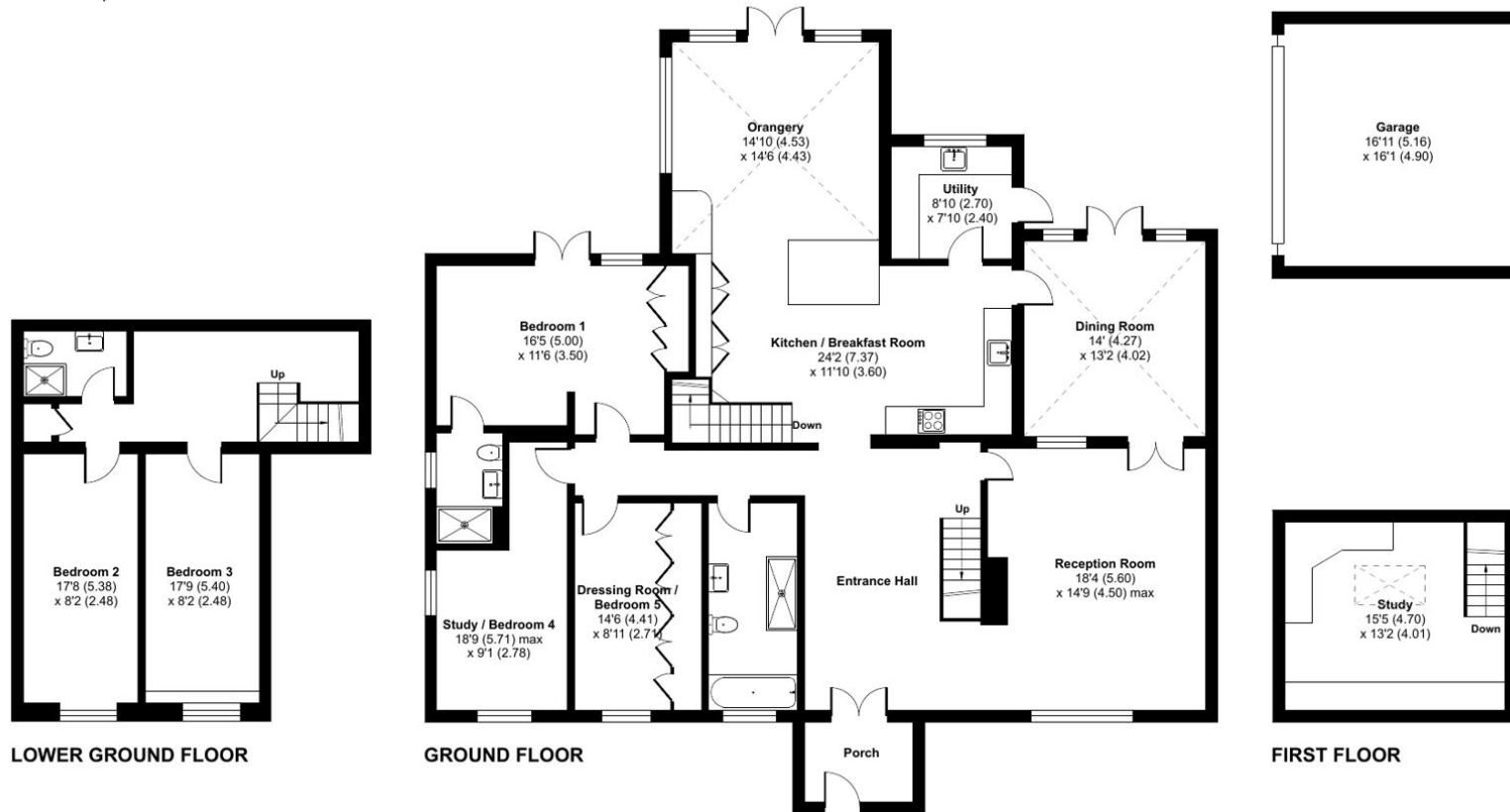
Warfield Park, Warfield, Berkshire, RG42

Approximate Area = 2738 sq ft / 254.3 sq m

Garage = 272 sq ft / 25.2 sq m

Total = 3010 sq ft / 279.3 sq m

For identification only - Not to scale



Floor plan produced in accordance with RICS Property Measurement Standards incorporating International Property Measurement Standards (IPMS2 Residential). © nichecom 2024. Produced for Bridges Estate Agents Ltd (Platinum Homes). REF: 1088477



Important Notice - These particulars are set out as a general outline only for the guidance of intended purchasers and do not form part of any offer or contract and must not be relied upon as statements or representations of fact. Purchasers must satisfy themselves by inspection or otherwise as to their correctness.

