

Two Bedroom Detached Bungalow

Greenways, Fleet, Hampshire, GU52 7UG

Price: £650,000

- Two/Three Bedrooms
- Detached Bungalow
- Courtmoor Area
- Driveway Parking
- No Onward Chain
- South/Easterly Garden
- Viewing Advised
- EPC: D (62)



Description

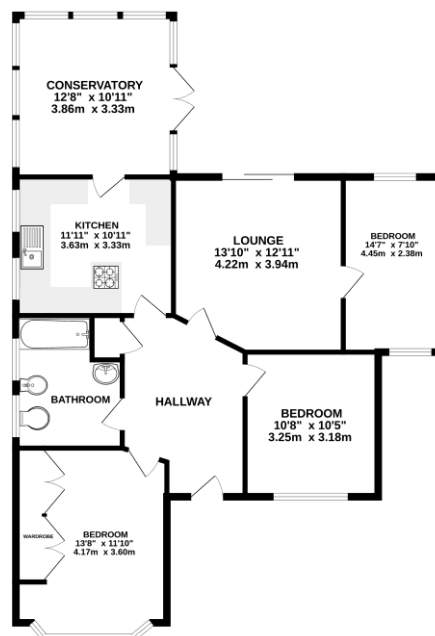
Offered to the market with no onward chain complications, this delightful two/three bedroom, detached bungalow situated within the Courtmoor area of Fleet and benefiting from a south east rear garden. The accommodation comprises: Entrance hall, living room, conservatory, kitchen/breakfast room, a shower/bathroom and two double bedrooms along with a further third bedroom/dining room. The property offers a generous driveway with parking for several vehicles. Viewings are highly recommended and strictly by appointment only.

Outside

A delightful South Easterly facing rear garden which is mainly laid to lawn with mature hedge borders and well stocked flower beds. A sandstone patio is positioned to the rear of the property creating a lovely spot for alfresco dining.

Floorplan

GROUND FLOOR



Whilst every attempt has been made to ensure the accuracy of the floorplan contained here, measurements of doors, windows, rooms and any other items are approximate and no responsibility is taken for any error, omission or misstatement. This plan is for guidance purposes only and should be used as such by any prospective purchaser. The services, systems and appliances shown have not been tested and no guarantee as to their operability or efficiency can be given.
Made with Mettler 12025



TO ARRANGE A VIEWING PLEASE CONTACT:
Tel: **01252 361550** or Email: **info@bridges.co.uk**



Important Notice - These particulars are set out as a general outline only for the guidance of intended purchasers/tenants and do not form part of any offer or contract and must not be relied upon as statements or representations of fact. Purchasers/Tenants must satisfy themselves by inspection or otherwise as to their correctness.