



One Bedroom Maisonette

Vesey Close, Farnborough, Hampshire, GU14 8UT

Offers in excess of: £185,000

- One Double Bedroom
- Spacious Living Room
- Modern Fitted Kitchen
- Allocated Parking
- Well Presented
- Walking Distance to Station and Amenities
- Communal Gardens
- EPC: C (73)



Description

A well presented one double bedroom maisonette situated in a peaceful location, within walking distance to Farnborough town centre and the mainline station.

An entrance hallway leads into the generous lounge/diner with access off to a double bedroom, three piece bathroom and a modern fitted kitchen.

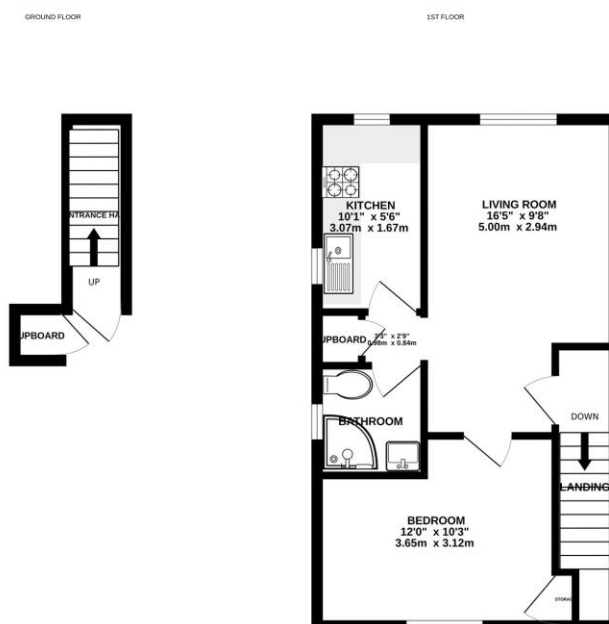
The property is set within a well maintained development, surrounded by some well presented communal gardens and benefitting from allocated parking.

Viewings are highly recommended and can be arranged with the Bridges team.

Outside

The property offers a generous amount of communal gardens that are very well maintained and allocated parking.

Floorplan



While every attempt has been made to ensure the accuracy of the floorplan contained herein, measurements of doors, windows, rooms and any other parts are approximate and no responsibility is taken for any error, omission or mis-statement. This plan is for illustrative purposes only and should be used as a guide only. prospective purchaser. The services, appliances and equipment shown here are not shown to scale and no guarantee as to their operability or efficiency can be given. Made with MyHomeplan 10/20



TO ARRANGE A VIEWING PLEASE CONTACT:
Tel: **01252 361550** or Email: **info@bridges.co.uk**



Important Notice - These particulars are set out as a general outline only for the guidance of intended purchasers/tenants and do not form part of any offer or contract and must not be relied upon as statements or representations of fact. Purchasers/Tenants must satisfy themselves by inspection or otherwise as to their correctness.