



## Six Bedroom Semi-Detached House

**The Street, Crookham Village, Fleet, Hampshire, GU51 5SH**

Offers Over: £760,000

- Three Bedroom Cottage
- Character Property
- Two Additional Apartments
- Shingle Driveway
- Double Garage
- Village Location
- Viewing Advised
- EPC: D (57)



## Description

Believed to date back to 1636 and offered to the market for the first time in over 45 years, this character three bedroom semi-detached cottage is situated in the Heart of Crookham Village and backs onto a farmer's field. The property also offers a detached annex which is currently split in to two separate apartments and a double garage. The accommodation within the main house comprises: an 'L' shaped living room, farmhouse style kitchen, dining room, cloakroom, and rear porch to the ground floor, whilst the first floor offers a principal bedroom with a dressing area, a family bathroom, and two further bedrooms. Viewings are highly recommended and strictly by appointment.

## Outside

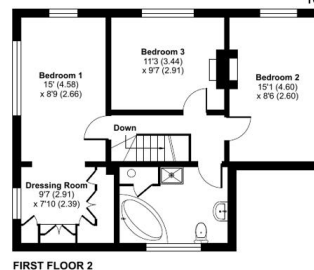
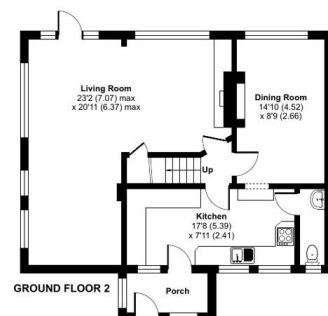
The property offers a front lawn with a foot path to the front door and there is a shingle laid driveway to one side further leading to parking at the rear as well as in between the main house and the rear annexe and garage. A further garden which is mainly laid to lawn is situated behind the annexe building and backs onto a farmer's field.

## Floorplan

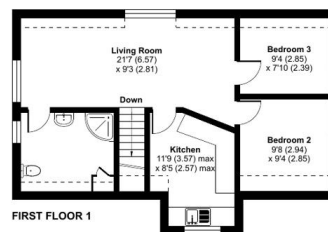
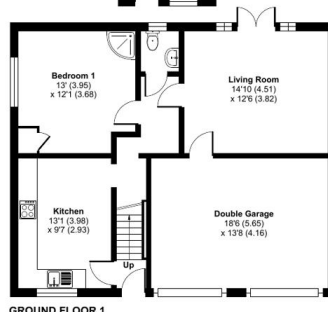


### The Street, Crookham Village, Fleet, GU51

Approximate Area = 2492 sq ft / 231.5 sq m  
 Limited Use Area(s) = 60 sq ft / 5.5 sq m  
 Garage = 243 sq ft / 22.5 sq m  
 Total = 2795 sq ft / 259.7 sq m  
 For identification only - Not to scale



Denotes restricted head height



Floor plan produced in accordance with RICS Property Measurement 2nd Edition, incorporating International Property Measurement Standards (IPMS2 Residential). © nitchcom 2025. Produced for Bridges Estate Agents. REF: 1233703



**TO ARRANGE A VIEWING PLEASE CONTACT:**  
 Tel: **01252 361550** or Email: **info@bridges.co.uk**



Important Notice - These particulars are set out as a general outline only for the guidance of intended purchasers/tenants and do not form part of any offer or contract and must not be relied upon as statements or representations of fact. Purchasers/Tenants must satisfy themselves by inspection or otherwise as to their correctness.