

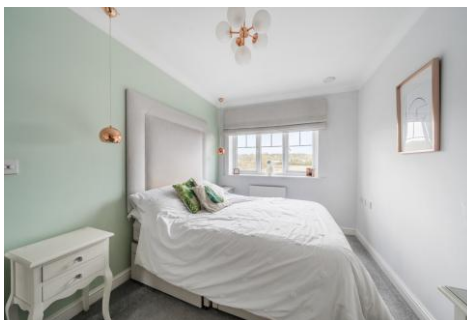


One Bedroom Semi-Detached House

Wey Meadow Close, Farnham, Surrey, GU9 8TX

Price: £325,000 *Freehold*

- One Double Bedroom
- Semi-Detached House
- Excellent Condition
- First Floor Bathroom
- Private Rear Garden
- Ample Off Road Parking
- NHBC Guarantee
- EPC: B (81)



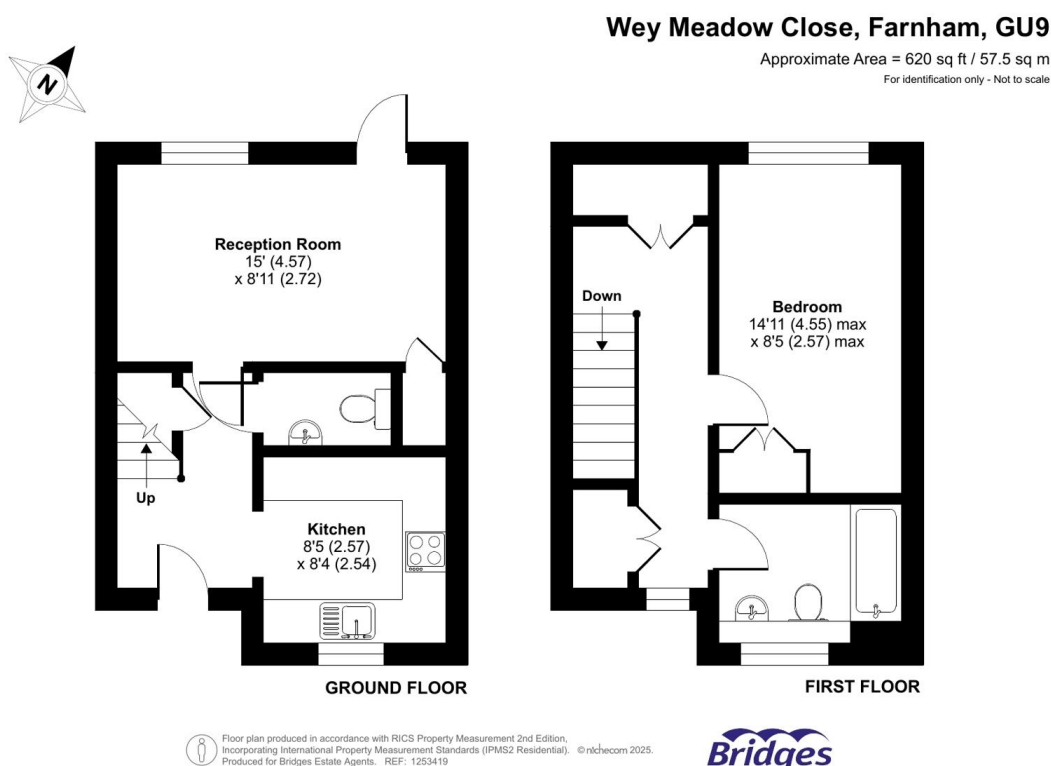
Description

An outstanding one double bedroom semi-detached home ideally situated in a cul-de-sac within walking distance of Farnham mainline train station and the town centre. Ideal for first time buyers, business professionals, and downsizers, this excellent property benefits from ample off road parking for multiple vehicles and boasts its own private rear garden, which is surprisingly substantial in size. The internal accommodation is spacious, comprising a living room across the rear of the ground floor, with a modern kitchen to the front; to the first floor is a double bedroom and the bathroom. This is a modern home which is low maintenance throughout with potential to extend (STPP).

Outside

To the side of the property is a deep driveway, with enough space for multiple vehicles. There is gated access to the rear garden, which is also accessible via the back door from the living room; the garden itself is a good size and is mostly laid to lawn, with a patio area and decked areas in addition to a garden shed.

Floorplan



TO ARRANGE A VIEWING PLEASE CONTACT:
Tel: **01252 361550** or Email: **info@bridges.co.uk**



Important Notice - These particulars are set out as a general outline only for the guidance of intended purchasers/tenants and do not form part of any offer or contract and must not be relied upon as statements or representations of fact. Purchasers/Tenants must satisfy themselves by inspection or otherwise as to their correctness.