



One Bedroom Terraced House

Moorlands Road, Camberley, Surrey, GU15 3AF

Price: £270,000

- One Double Bedroom
- Freehold
- Allocated Parking
- Refitted Kitchen
- Built in Wardrobes
- Off Street Parking
- Estimated Rental Price: £1250pcm
- EPC: D (59)



Description

An ideal property for investors or first time buyers! A one bedroom freehold home within walking distance to Camberley Town Centre.

Downstairs comprises a lounge/diner and a refitted kitchen. Upstairs there is a double bedroom with fitted wardrobes and the family bathroom.

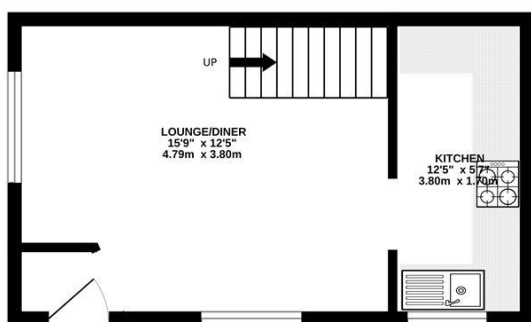
Situated in a convenient position within easy access of local amenities and excellent transport links. There is also the added bonus of Frimley Park Hospital being less than 2 miles away and Camberley town centre and train station also about a mile from the house.

Outside

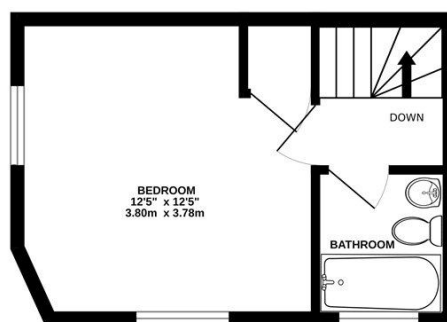
There is a small private area leading to front door where the current owner has a BBQ and table with chairs. There is an off street parking area located adjacent to the house and plenty of visitor parking on street nearby.

Floorplan

GROUND FLOOR



1ST FLOOR



Whilst every attempt has been made to ensure the accuracy of the floorplan contained here, measurements of doors, windows, rooms and any other items are approximate and no responsibility is taken for any error, omission or mis-statement. This plan is for illustrative purposes only and should be used as such by any prospective purchaser. The services, systems and appliances shown have not been tested and no guarantee as to their operability or efficiency can be given.
Made with Metropix ©2025



TO ARRANGE A VIEWING PLEASE CONTACT:

Tel: 01276 685544 or Email:

camberley@bridges.co.uk



Important Notice - These particulars are set out as a general outline only for the guidance of intended purchasers/tenants and do not form part of any offer or contract and must not be relied upon as statements or representations of fact. Purchasers/Tenants must satisfy themselves by inspection or otherwise as to their correctness.