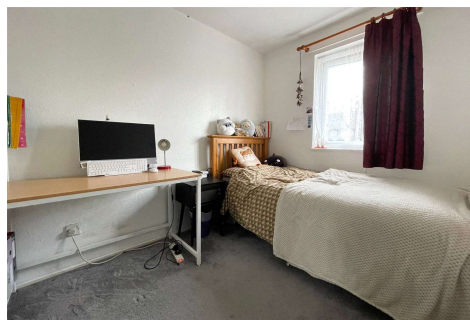
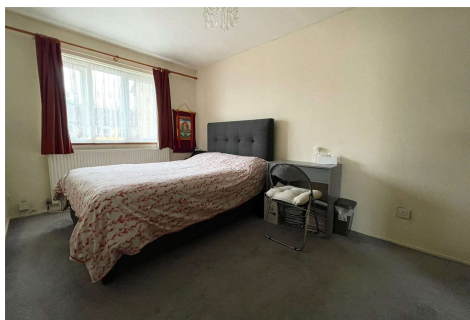


Three Bedroom Terraced House

Spurs Court, Aldershot, Hampshire, GU11 1YE

Price: £345,000

- Three Double Bedrooms
- Residential Parking
- Popular Residential Area
- Kitchen/Breakfast Room
- Must be Seen to be Appreciated
- Established Rear Garden
- Walking Distance to Well Regarded Schools
- EPC: C (75)



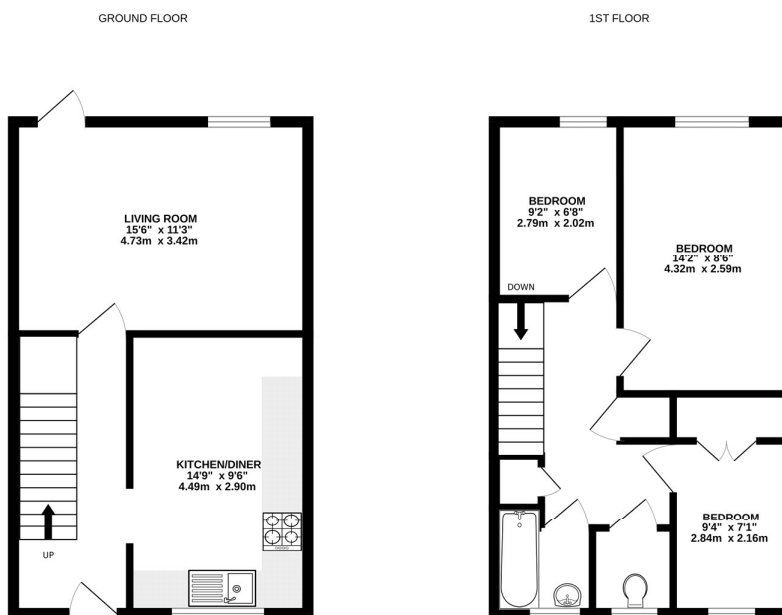
Description

Situated in a popular residential cul-de-sac location, just a short walk to Rowhill Conservation area. Set over two floors being presented in good order throughout, the property offers: a kitchen, and dining room, three bedrooms and a lounge with double doors opening onto the enclosed rear garden. The property further benefits from residential off road parking and an established rear garden. Located just 0.5 miles from the train station, which offers direct links to London Waterloo, this exceptional family home is also within walking distance of popular schools and Rowhill Nature Reserve. Give us a call today to book your viewing!

Outside

To the rear of the property is an established rear garden, as well as a patio area with a pergola - perfect for alfresco dining in the summer evening sun, leading to a laid lawn.

Floorplan



Whilst every attempt has been made to ensure the accuracy of the floorplan contained here, measurements of doors, windows, rooms and any other items are approximate and no responsibility is taken for any error, omission or mis-statement. This plan is for illustrative purposes only and should be used as such by any prospective purchaser. The services, systems and appliances shown have not been tested and no guarantee as to their operability or efficiency can be given.
Made with Metronix C2024



TO ARRANGE A VIEWING PLEASE CONTACT:
Tel: **01252 361550** or Email: **info@bridges.co.uk**



Important Notice - These particulars are set out as a general outline only for the guidance of intended purchasers/tenants and do not form part of any offer or contract and must not be relied upon as statements or representations of fact. Purchasers/Tenants must satisfy themselves by inspection or otherwise as to their correctness.