



Two Bedroom Ground Floor Apartment Cyprus Road, Deepcut, Camberley, Surrey, GU16 6TH

Price: £280,000

- Two Double Bedrooms
- Luxury Apartment
- Ground Floor
- Open Plan Kitchen/Living/Dining Room
- Modern Bathroom
- High Specification
- Allocated Parking
- EPC: C (80)



Description

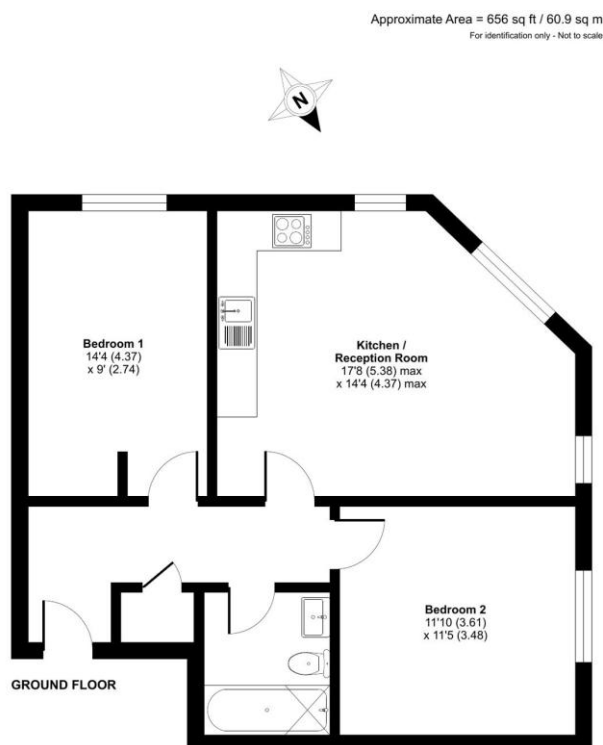
Built in 2022, is this luxury ground floor two double bedroom apartment located in the sought after Mindenhurst Development in Deepcut.

The property has light and spacious accommodation comprising; good size hallway with storage cupboard, an open plan arrangement with a high specification kitchen, living/dining area, two excellent double bedrooms and a modern bathroom. An internal inspection is highly recommended to appreciate this apartment.

Outside

There is allocated parking with a good amount of visitor parking.

Floorplan



TO ARRANGE A VIEWING PLEASE CONTACT:
Tel: **01252 361550** or Email: **info@bridges.co.uk**



Important Notice - These particulars are set out as a general outline only for the guidance of intended purchasers/tenants and do not form part of any offer or contract and must not be relied upon as statements or representations of fact. Purchasers/Tenants must satisfy themselves by inspection or otherwise as to their correctness.