



Two Bedroom Mobile Home, Retirement Water End Park, Old Basing, Basingstoke, Hampshire, RG24 7BB

Price: £265,000

- Two Double Bedrooms
- Brand New Park Home
- 40ft x 20ft
- En Suite and Separate Bathroom
- Living and Dining Space
- Off Road Parking
- Immediate Possession Available
- EPC: TBC



Description

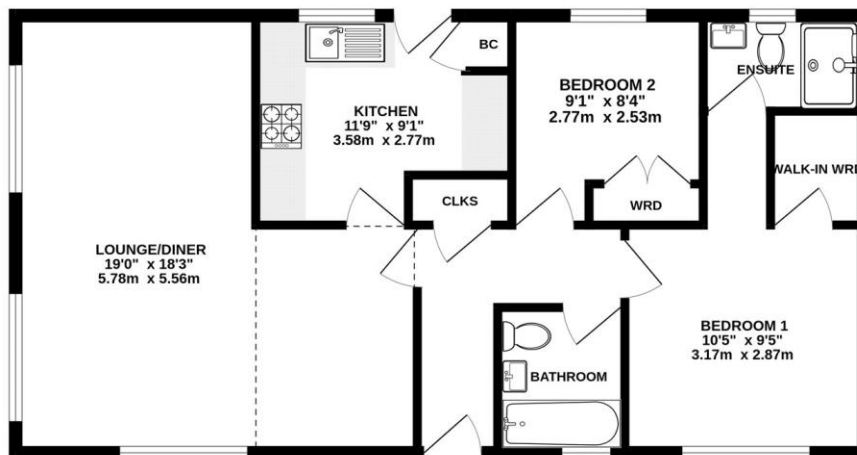
Situated in the sought after Water End Park, these four newly built park homes boast a spacious 40ft x 20ft double unit design. Each home is equipped with new furniture and features fully fitted kitchens, complete with a range of built-in appliances such as a dishwasher, washing machine, and fridge/freezer. Enjoy the comfort of LPG mains heating through a combi boiler. The principal bedroom comes with a walk-in wardrobe and en suite, while the second bedroom is equipped with wardrobes. Additional amenities include off-road parking and a wrap-around garden. Immediate possession is available.

Outside

The garden wraps around the park home and is laid to lawn, with blocked paved driveway for off road parking, and steps up to the front door.

Floorplan

PARK HOME



Whilst every attempt has been made to ensure the accuracy of the floorplan contained here, measurements of doors, windows, rooms and any other items are approximate and no responsibility is taken for any error, omission or mis-statement. This plan is for illustrative purposes only and should be used as such by any prospective purchaser. The services, systems and appliances shown have not been tested and no guarantee as to their operability or efficiency can be given.
Made with Metropac C0023



TO ARRANGE A VIEWING PLEASE CONTACT:
Tel: **01256 769999** or Email: **info@bridges.co.uk**



Important Notice - These particulars are set out as a general outline only for the guidance of intended purchasers/tenants and do not form part of any offer or contract and must not be relied upon as statements or representations of fact. Purchasers/Tenants must satisfy themselves by inspection or otherwise as to their correctness.