



Four Bedroom End of Terrace House

Southwark Close, Yateley, Hampshire, GU46 6QG

Price: £525,000

- Four Bedroom Extended Family Home
- 20 Foot Dining Room and 18 Foot Living Room
- Utility Room and Downstairs Cloakroom
- Modern Kitchen Breakfast Room
- Low Maintenance Front and Rear Garden
- Modern En Suite and Four Piece Bathroom
- Well Presented Throughout
- EPC: C (74)



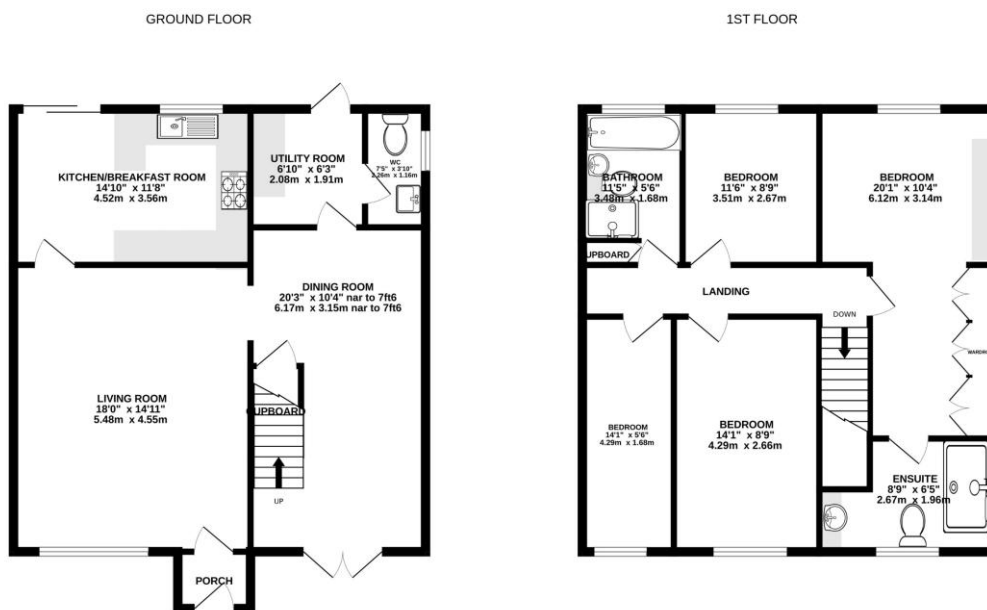
Description

Tucked away in a small cul-de-sac and offering a good degree of seclusion is this spacious extended four bedroom end of terrace family home. Ideally positioned for easy access to Yateley Green, local schools and the village. The property offers three double bedrooms and a long forth bedroom. There is a modern en suite and family four piece bathroom. The property features a low maintenance front and rear garden, utility room, downstairs cloakroom, modern kitchen/breakfast room, 20 foot dining room and separate 18 foot living room and resident parking.

Outside

There is a maintenance free rear garden offering a good degree of seclusion. The garden consists of a Indian stone patio and artificial lawn, tap all enclosed by wood panel fencing. There is also an area to the side which opens up to a further patio area with space for a shed, gated access all enclosed by wood panel fencing. There is an additional front garden enclosed by picket fencing, gate, artificial lawn and a path to the front porch.

Floorplan



TO ARRANGE A VIEWING PLEASE CONTACT:

Tel: 01344 962150 or Email:



Important Notice - These particulars are set out as a general outline only for the guidance of intended purchasers/tenants and do not form part of any offer or contract and must not be relied upon as statements or representations of fact. Purchasers/Tenants must satisfy themselves by inspection or otherwise as to their correctness.