



## Three Bedroom Detached House

**Little Hannocks Close, Ash, Surrey, GU12 6BD**

Offers in excess of: £525,000

- Three Bedroom Detached
- Driveway Parking
- New Build Warranty in Place
- En Suite
- Walking Distance to Ash Rail Station
- Immaculate Throughout
- Kitchen/Diner
- EPC: B (85)



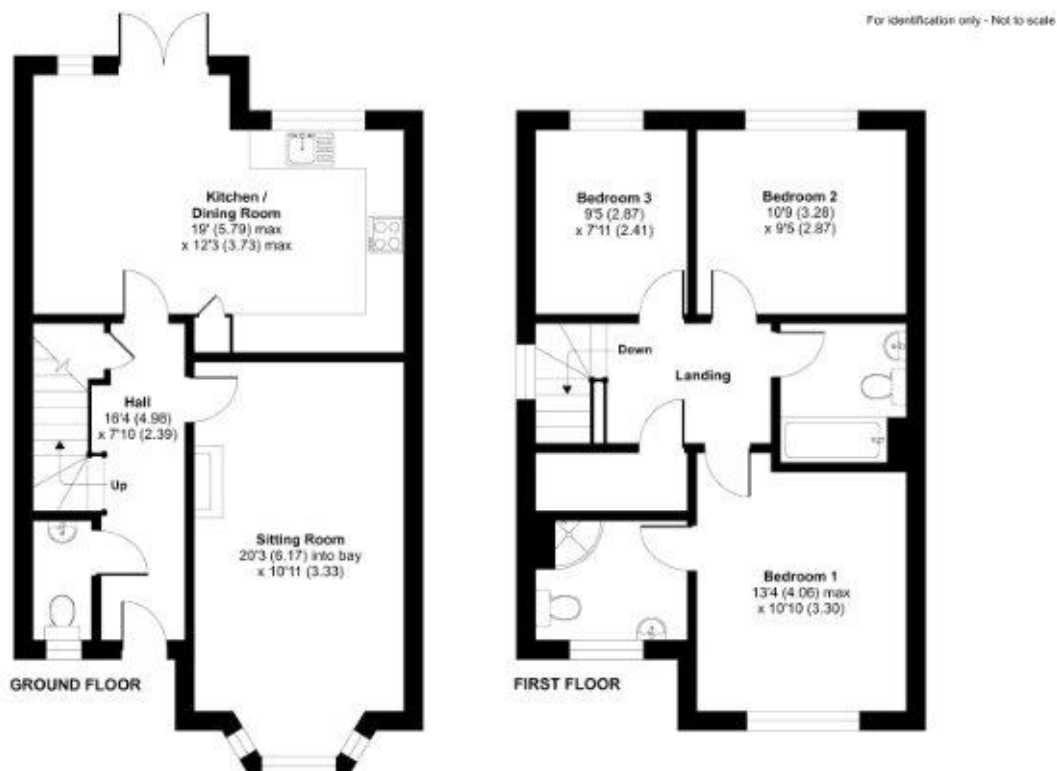
## Description

**\*\*NO ONWARD CHAIN\*\*** Set within a quiet residential area is this immaculate detached three bedroom house. The house benefits from a new homes warranty and is offered to the market with no onward chain. The downstairs boasts a spacious living room and a cloakroom - alongside a kitchen/diner with plenty of work top and cupboard space, integrated appliances and doors leading into the garden. Upstairs benefits from three bedrooms, an en suite to bedroom one and a family bathroom suite. Call us today to book your viewing!

## Outside

Outside benefits from a private enclosed garden, side access and driveway parking.

## Floorplan



**TO ARRANGE A VIEWING PLEASE CONTACT:**  
Tel: **01252 361550** or Email: **info@bridges.co.uk**



**Important Notice** - These particulars are set out as a general outline only for the guidance of intended purchasers/tenants and do not form part of any offer or contract and must not be relied upon as statements or representations of fact. Purchasers/Tenants must satisfy themselves by inspection or otherwise as to their correctness.