



## Three Bedroom Semi-Detached House

**Beacon Close, Wrecclesham, Farnham, Surrey, GU10 4PA**

Price: £520,000

- Three Bedrooms
- Light, Open Plan Lounge/Diner
- Recently Fitted Kitchen
- Off Road Parking and Single Garage
- Excellent South Farnham Location
- Situated in Peaceful Cul-De-Sac
- Close Proximity to Schools
- EPC : D (55)





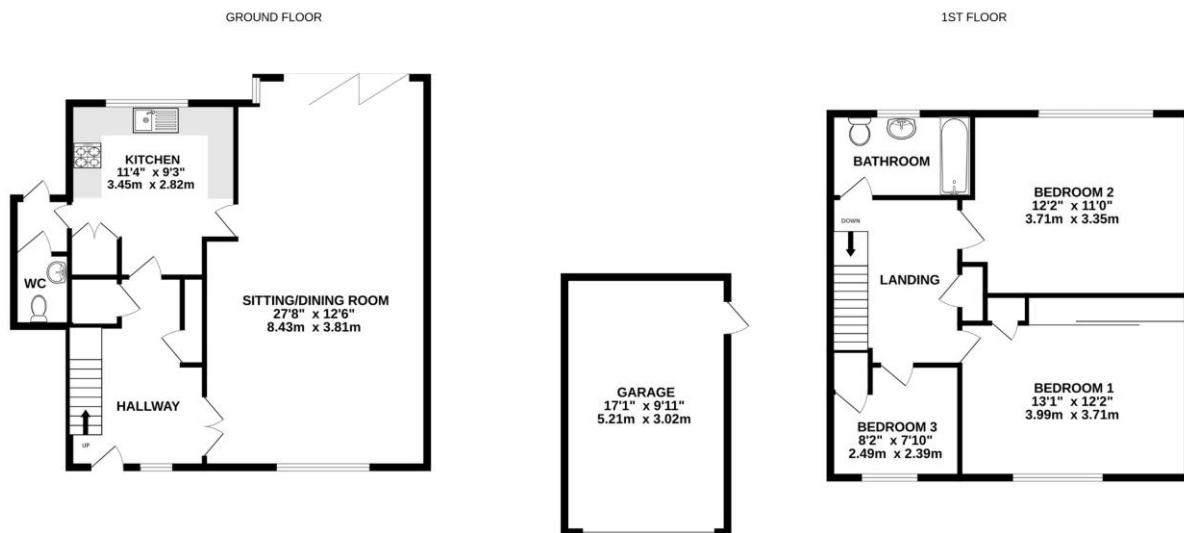
## Description

An excellent opportunity to purchase this three bedroom semi-detached family home situated in a peaceful, tucked away cul-de-sac on the south side of Farnham. This home has been updated by the current vendors to offer the best of contemporary living. Once through the front door, you are greeted by a welcoming hallway which provides access to a dual aspect open plan lounge/diner boasting plenty of light, a wood burning stove, and bi-fold doors leading to the rear garden. The modern kitchen offers pleasant views of the rear garden and space for both integrated/freestanding appliances. Additionally, there is a downstairs cloakroom. The upstairs has three well proportioned bedrooms and a beautifully presented three piece bathroom suite.

## Outside

Externally is just as impressive with a generous driveway and a single garage to the front. The rear garden is mostly laid to lawn and features mature flowers/trees offering a good degree of seclusion. There is a patio area perfect for entertaining in privacy, a greenhouse, and a shed for storage.

## Floorplan



Whilst every attempt has been made to ensure the accuracy of the floorplan contained here, measurements of doors, windows, rooms and any other items are approximate and no responsibility is taken for any error, omission or mis-statement. This plan is for illustrative purposes only and should be used as such by any prospective purchaser. The services, systems and appliances shown have not been tested and no guarantee as to their operability or efficiency can be given.  
Made with MetroPix ©2024



**TO ARRANGE A VIEWING PLEASE CONTACT:**  
Tel: **01252 361550** or Email: **info@bridges.co.uk**



**Important Notice** - These particulars are set out as a general outline only for the guidance of intended purchasers/tenants and do not form part of any offer or contract and must not be relied upon as statements or representations of fact. Purchasers/Tenants must satisfy themselves by inspection or otherwise as to their correctness.