



## Two Bedroom House

**Middlefield, Farnham, Surrey, GU9 8PZ**

Price: £425,000

- Two Bedrooms
- Excellent Condition
- Walking Distance To Weydon
- Driveway
- Spacious Garden
- Local to Farnham Town
- Potential To Extend (STPP)
- EPC : C (72)



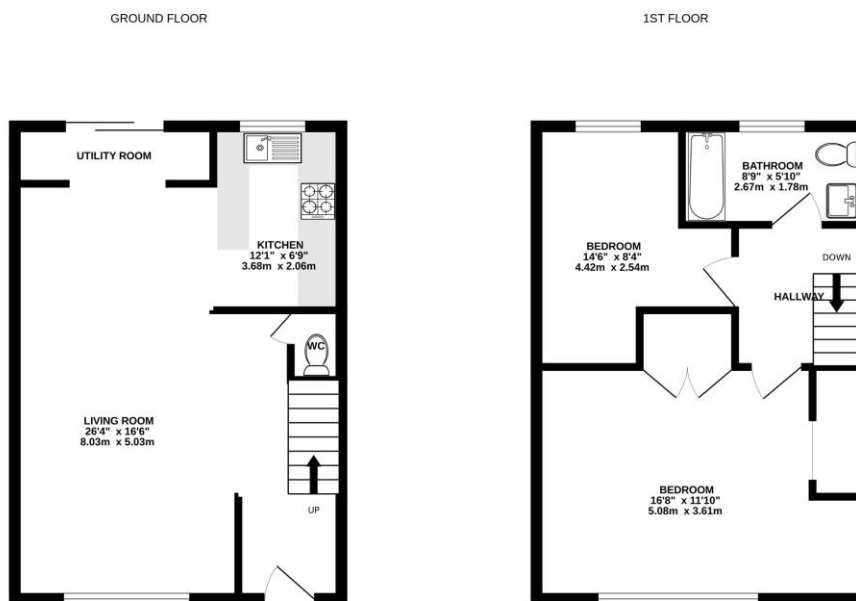
## Description

An outstanding two bedroom property offering the best of contemporary living throughout, situated within walking distance to popular schools. Once through the front door you are greeted by a captivating open planned lounge/dining area, with dual aspect allowing for plenty of natural light. The modern kitchen features integrated appliances and a breakfast bar. The upstairs comprises two generously sized double bedrooms and a well presented family bathroom suite.

## Outside

To the front is a spacious, paved driveway for multiple vehicles. The rear garden is mostly laid to lawn with a paved area perfect for entertaining guests. The property benefits from being within walking distance to Farnham Town and Weydon Secondary School.

## Floorplan



Whilst every attempt has been made to ensure the accuracy of the floorplan contained here, measurements of doors, windows, rooms and any other items are approximate and no responsibility is taken for any error, omission or mis-statement. This plan is for illustrative purposes only and should be used as such by any prospective purchaser. The services, systems and appliances shown have not been tested and no guarantee as to their operability or efficiency can be given.  
Made with Metropac C2024



TO ARRANGE A VIEWING PLEASE CONTACT:  
Tel: **01252 361550** or Email: **info@bridges.co.uk**



Important Notice - These particulars are set out as a general outline only for the guidance of intended purchasers/tenants and do not form part of any offer or contract and must not be relied upon as statements or representations of fact. Purchasers/Tenants must satisfy themselves by inspection or otherwise as to their correctness.