

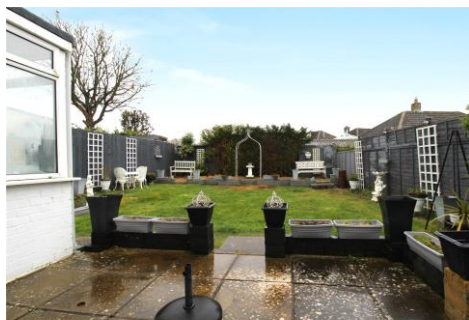


## Two Bedroom Detached Bungalow

**Hulbert Way, Basingstoke, Hampshire, RG22 6LZ**

Price: £400,000

- Two Bedrooms
- Detached Bungalow
- Dining Area
- Conservatory
- Driveway and Garage
- Close to all Local Amenities
- No Onward Chain
- EPC: D (56)



## Description

Offered to the market with no onward chain, this charming two/three bedroom detached bungalow is situated on the highly sought after Berg estate.

The property offers a flexible living space with two bedrooms and an additional room that can serve as a third bedroom or a formal dining area, perfect for modern living. The bright and airy lounge features patio doors that lead directly into the garden, allowing for an abundance of natural light and a seamless connection to the outdoor space.

The well appointed kitchen includes a breakfast area, creating a perfect spot to start your day. Just off the kitchen is a delightful conservatory, providing additional living space that can be enjoyed year round.

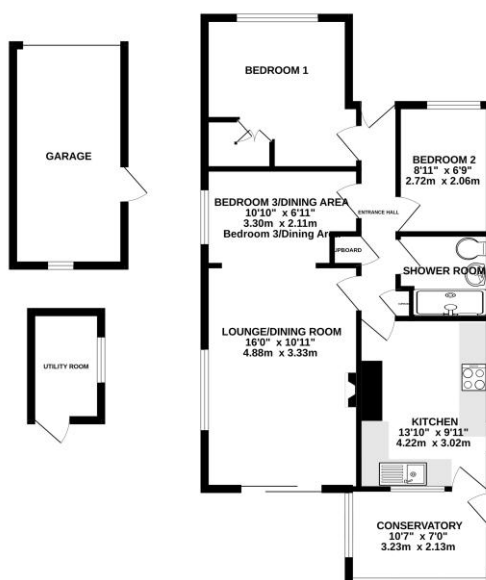
This bungalow is ideal for those looking for a peaceful, low maintenance home with the potential for customization to suit your needs. With no onward chain, it's ready to move into and make your own.

## Outside

Outside, the bungalow boasts a driveway providing access to the garage, with a convenient side access gate leading to the rear garden. The front garden is neatly enclosed by a dwarf brick wall. At the rear, the garden is private and enclosed by panel fencing, offering a peaceful retreat. There is also a side door leading directly into the garage, adding convenience. Additionally, the property benefits from a useful outbuilding currently being used as a utility room, complete with space for a washing machine and tumble dryer under the worktop. This bungalow is ideal for those seeking a peaceful, low maintenance home in a prime location, with the added advantage of no onward chain.

## Floorplan

GROUND FLOOR



Whilst every attempt has been made to ensure the accuracy of the floorplan contained herein, measurements of doors, windows, rooms and any other items are approximate and no responsibility is taken for any error, omission or misstatement. This plan is for illustrative purposes only and should be used as a guide only. Prospective purchasers should verify the accuracy of the floorplan and measurements by inspection and/or by other means. The seller, agent and publisher accept no liability for any error or omission.



**TO ARRANGE A VIEWING PLEASE CONTACT:**  
Tel: **01256 880001** or Email: **info@bridges.co.uk**



**Important Notice - These particulars are set out as a general outline only for the guidance of intended purchasers/tenants and do not form part of any offer or contract and must not be relied upon as statements or representations of fact. Purchasers/Tenants must satisfy themselves by inspection or otherwise as to their correctness.**